



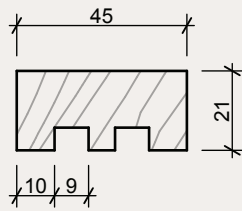
Verdus

TIMBER CLADDING AND
WEATHERBOARD SYSTEM

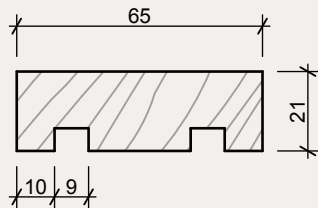
Installation Manual

VERSION 1.0

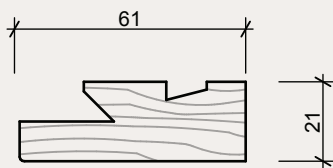
verdus.nz



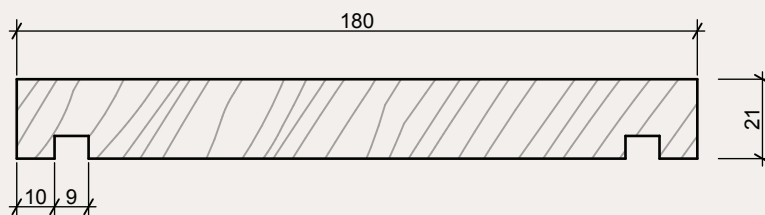
**VERDUS NZ Ltd. 45 x 21mm
VERDUS Batten**



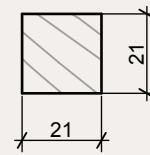
**VERDUS NZ Ltd. 65 x 21mm
VERDUS Batten**



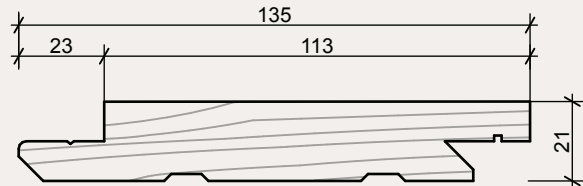
**VERDUS NZ Ltd.
VERDUS Ext Corner Moulding**



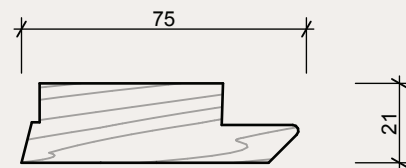
**VERDUS NZ Ltd. 180 x 21mm
VERDUS Fascia**



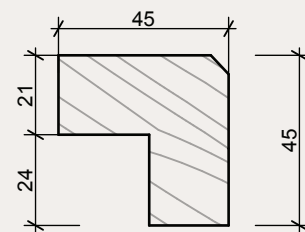
**VERDUS NZ Ltd.
VERDUS Int Corner Moulding**



**VERDUS NZ Ltd. V21 135x21mm
Interlocking Vertical Shiplap**



**VERDUS NZ Ltd.
VERDUS Ext Corner Moulding**

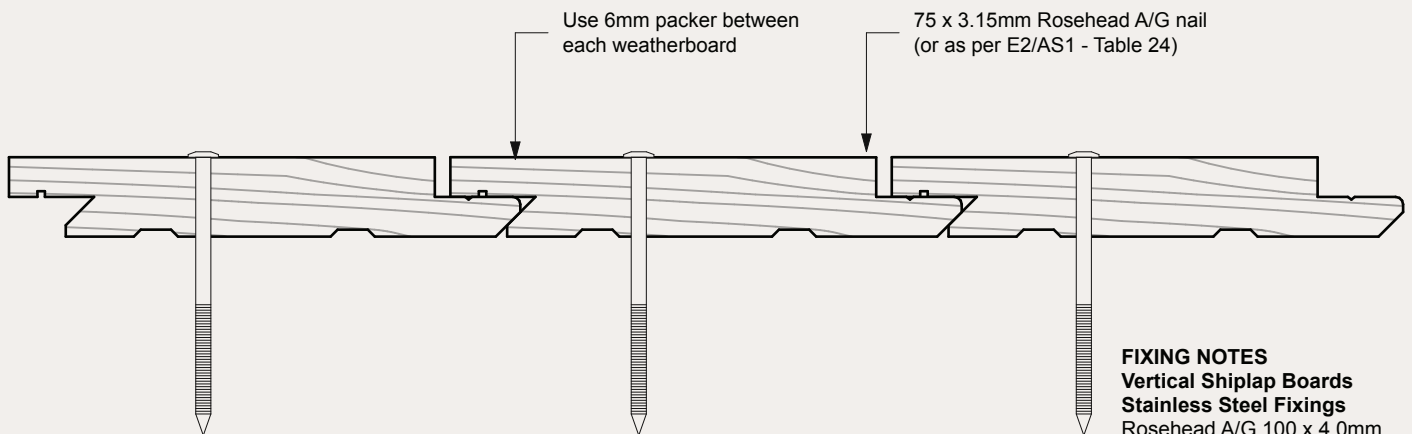
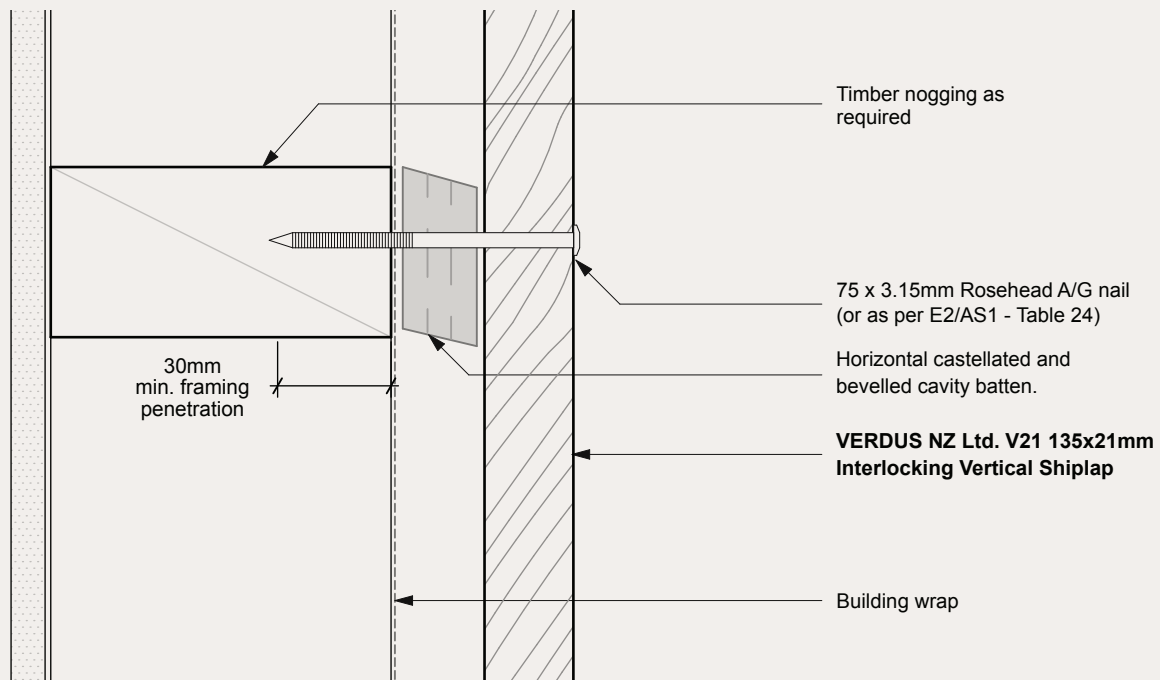


**VERDUS NZ Ltd.
VERDUS Ext Corner Moulding**

NOTES

- All nail fixings pre-drilled min. 1mm diameter smaller than the nail gauge
- All Verdus NZ Ltd timber products to be pre-coated and cut ends and edges and all fresh cut surfaces double coated and sealed before fixing.
- All corner flashings to be 75x75mm to suit all wind zones. All flashings to have hemmed edges to NZBC E2/AS1
- Avoid contact in seaspray zones or corrosion zone D between CCA treated timber and metal flashings. Refer NZBC E2/AS1 Table 21

Verdus Thermowood Weatherboard System. Cavity Fix		SCALE 1:2 @ A4
DRAWING Shiplap Weatherboard Profiles		01



FIXING NOTES

Vertical Shiplap Boards

Stainless Steel Fixings

Rosehead A/G 100 x 4.0mm

Rosehead A/G 75 x 3.15mm

Rosehead A/G 60 x 3.15mm

Rosehead A/G 38 x 3.15mm

Silicone Bronze Fixings

Rosehead A/G 100 x 4.0mm

Rosehead A/G 75 x 3.25mm

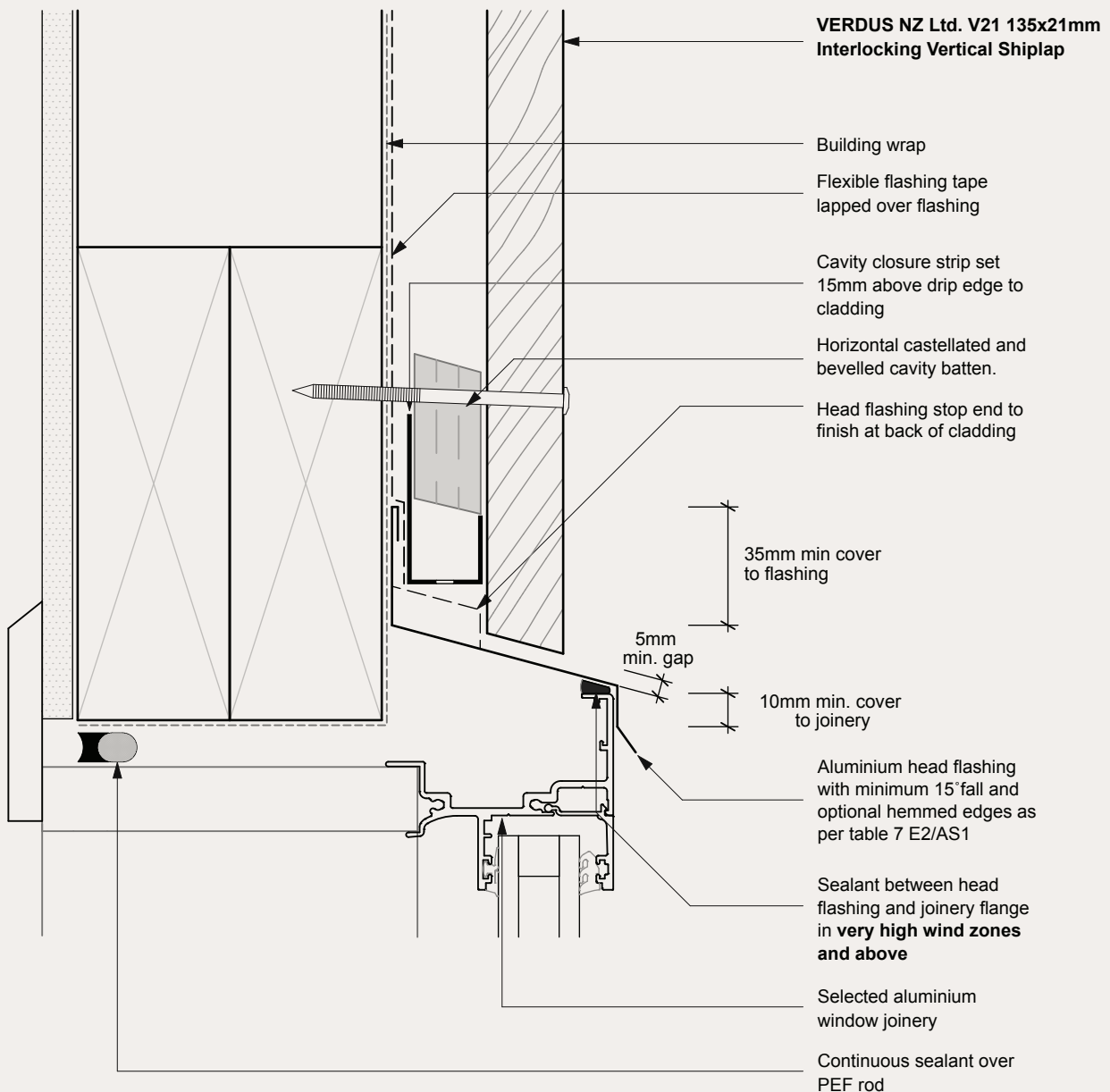
Rosehead A/G 60 x 3.25mm

Rosehead A/G 38 x 3.25mm

NOTES

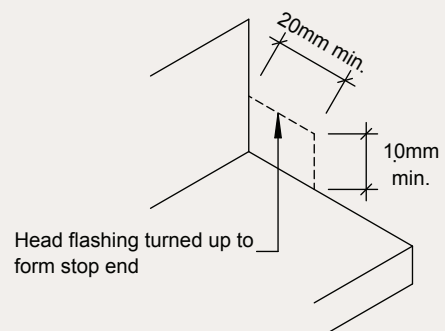
- All nail fixings pre-drilled min. 1mm diameter smaller than the nail gauge
- All Verdus NZ Ltd timber products to be pre-coated and cut ends and edges and all fresh cut surfaces double coated and sealed before fixing.
- All corner flashings to be 75x75mm to suit all wind zones. All flashings to have hemmed edges to NZBC E2/AS1
- Avoid contact in seaspray zones or corrosion zone D between CCA treated timber and metal flashings. Refer NZBC E2/AS1 Table 21

Verdus Thermowood Weatherboard System. Cavity Fix		SCALE 1:2 @ A4
DRAWING	Detail Cavity Fix	02

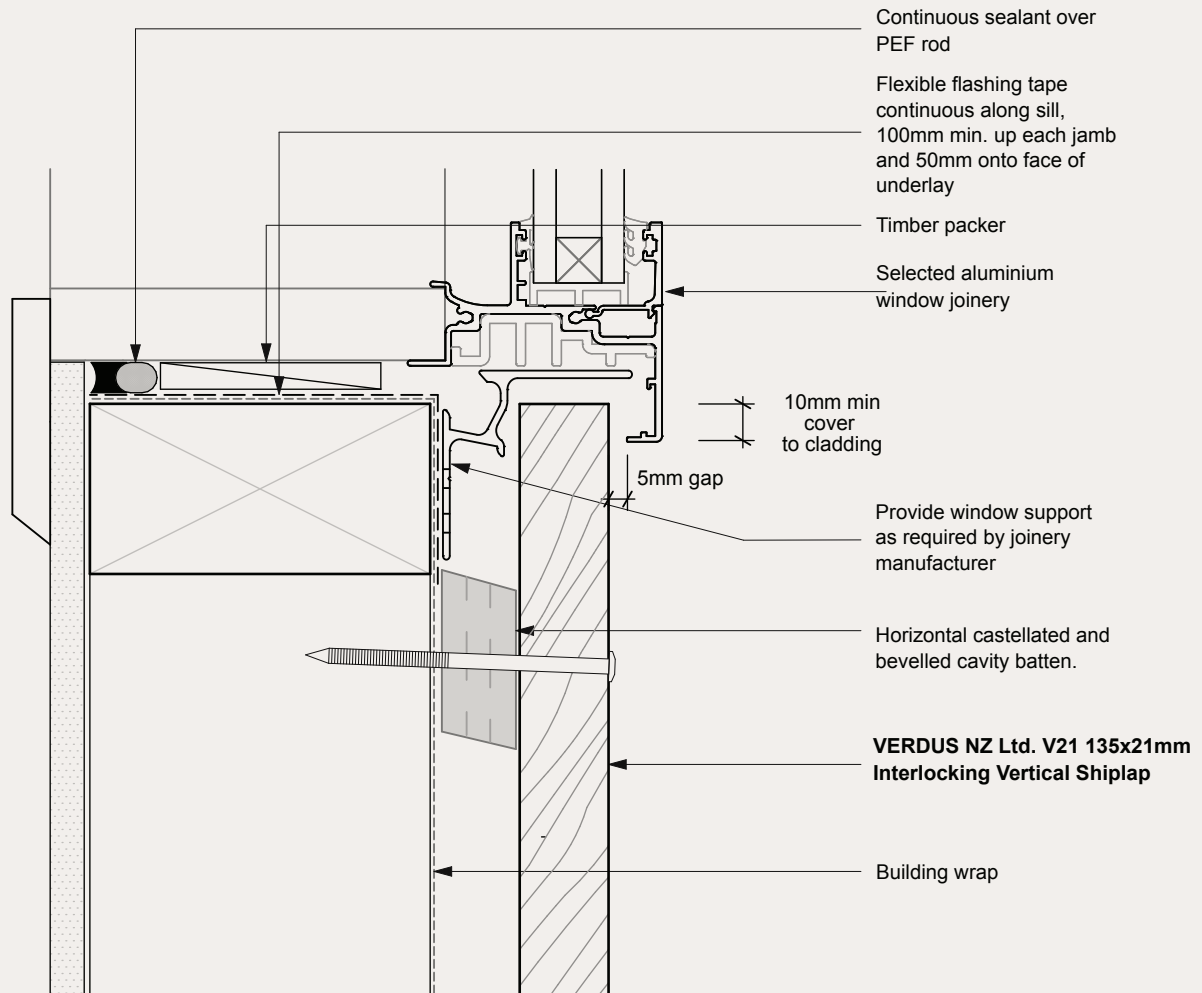


NOTES

- All nail fixings pre-drilled min. 1mm diameter smaller than the nail gauge
- All Verdus NZ Ltd timber products to be pre-coated and cut ends and edges and all fresh cut surfaces double coated and sealed before fixing.
- All corner flashings to be 75x75mm to suit all wind zones. All flashings to have hemmed edges to NZBC E2/AS1
- Avoid contact in seaspray zones or corrosion zone D between CCA treated timber and metal flashings. Refer NZBC E2/AS1 Table 21



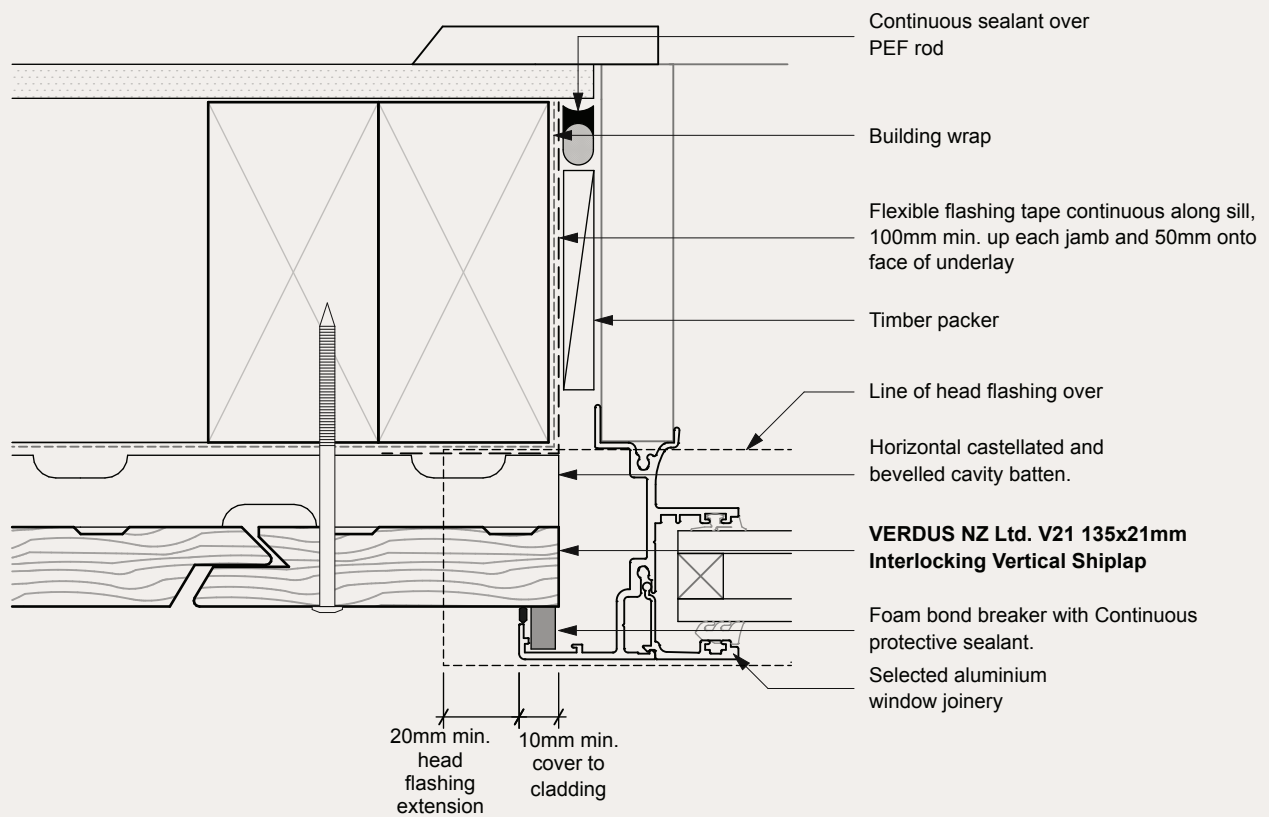
Verdus Thermowood Weatherboard System. Cavity Fix		SCALE 1:2 @ A4
DRAWING	Window Head Detail	03



NOTES

- All nail fixings pre-drilled min. 1mm diameter smaller than the nail gauge
- All Verdus NZ Ltd timber products to be pre-coated and cut ends and edges and all fresh cut surfaces double coated and sealed before fixing.
- All corner flashings to be 75x75mm to suit all wind zones. All flashings to have hemmed edges to NZBC E2/AS1
- Avoid contact in seaspray zones or corrosion zone D between CCA treated timber and metal flashings. Refer NZBC E2/AS1 Table 21

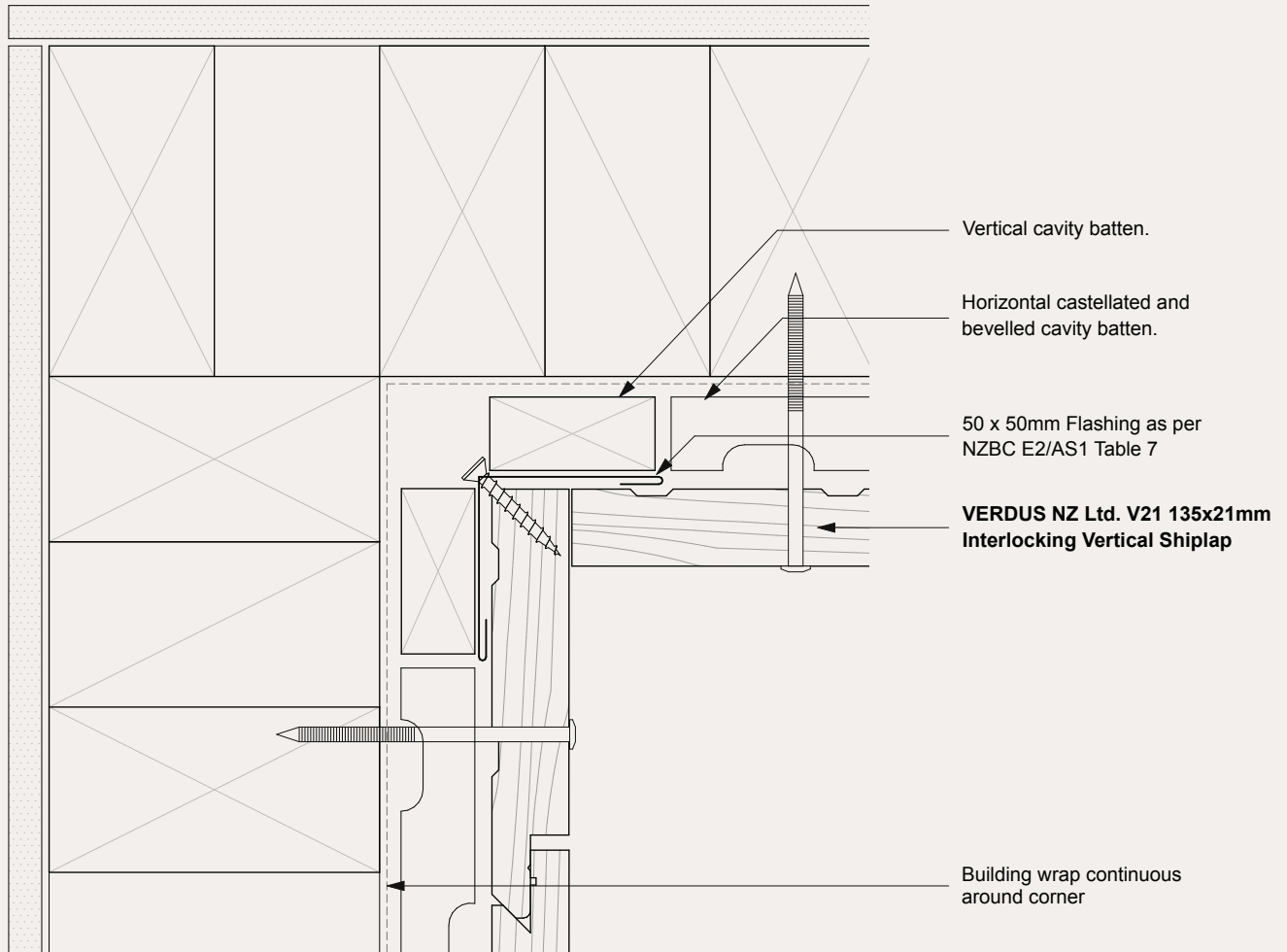
Verdus Thermowood Weatherboard System. Cavity Fix		SCALE 1:2 @ A4
DRAWING	Window Sill Detail	04



NOTES

- All nail fixings pre-drilled min. 1mm diameter smaller than the nail gauge
- All Verdus NZ Ltd timber products to be pre-coated and cut ends and edges and all fresh cut surfaces double coated and sealed before fixing.
- All corner flashings to be 75x75mm to suit all wind zones. All flashings to have hemmed edges to NZBC E2/AS1
- Avoid contact in seaspray zones or corrosion zone D between CCA treated timber and metal flashings. Refer NZBC E2/AS1 Table 21

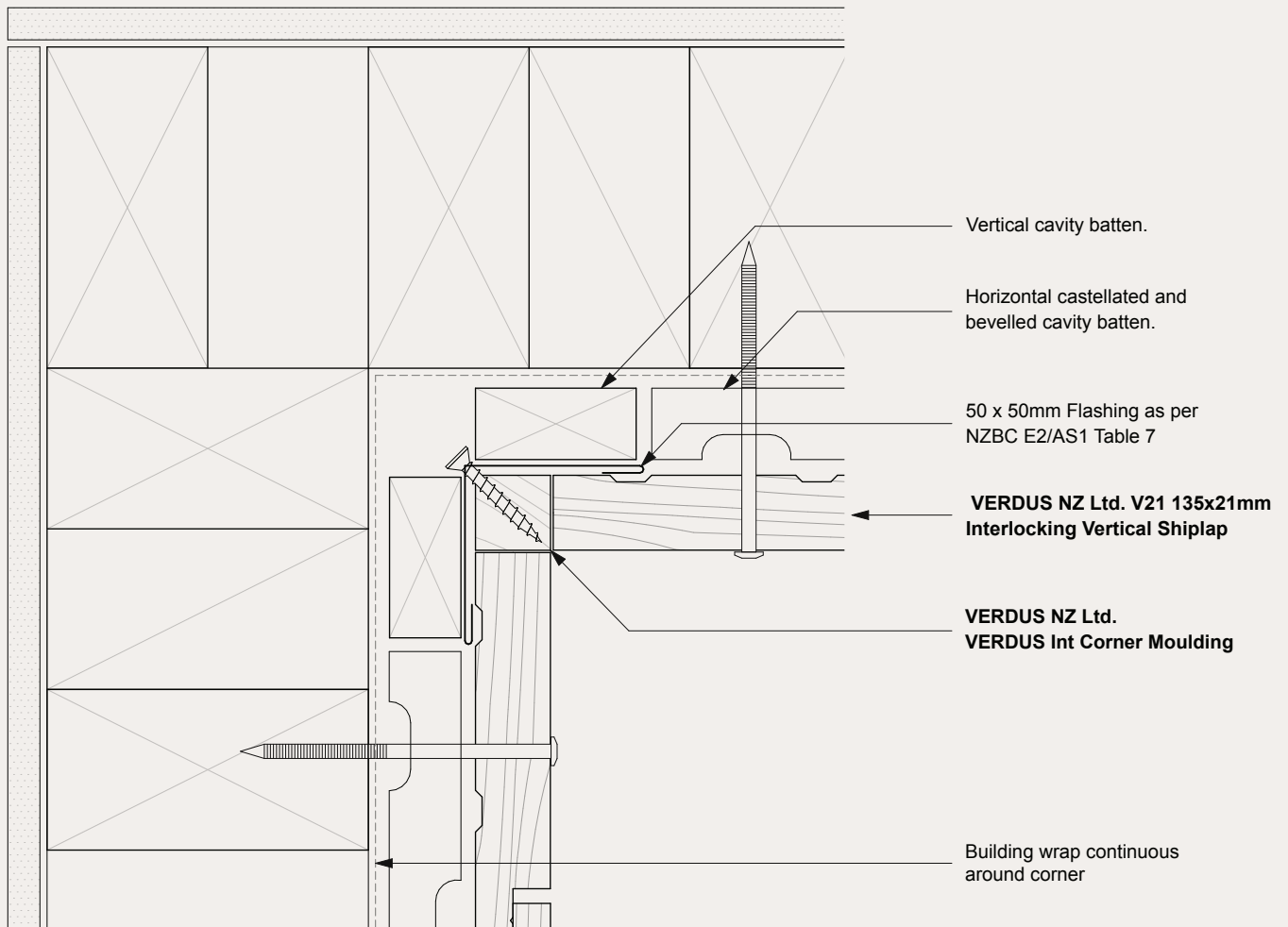
Verdus Thermowood Weatherboard System. Cavity Fix		SCALE 1:2 @ A4
DRAWING	Window Jamb Detail	05



NOTES

- All nail fixings pre-drilled min. 1mm diameter smaller than the nail gauge
- All Verdus NZ Ltd timber products to be pre-coated and cut ends and edges and all fresh cut surfaces double coated and sealed before fixing.
- All corner flashings to be 75x75mm to suit all wind zones. All flashings to have hemmed edges to NZBC E2/AS1
- Avoid contact in seaspray zones or corrosion zone D between CCA treated timber and metal flashings. Refer NZBC E2/AS1 Table 21

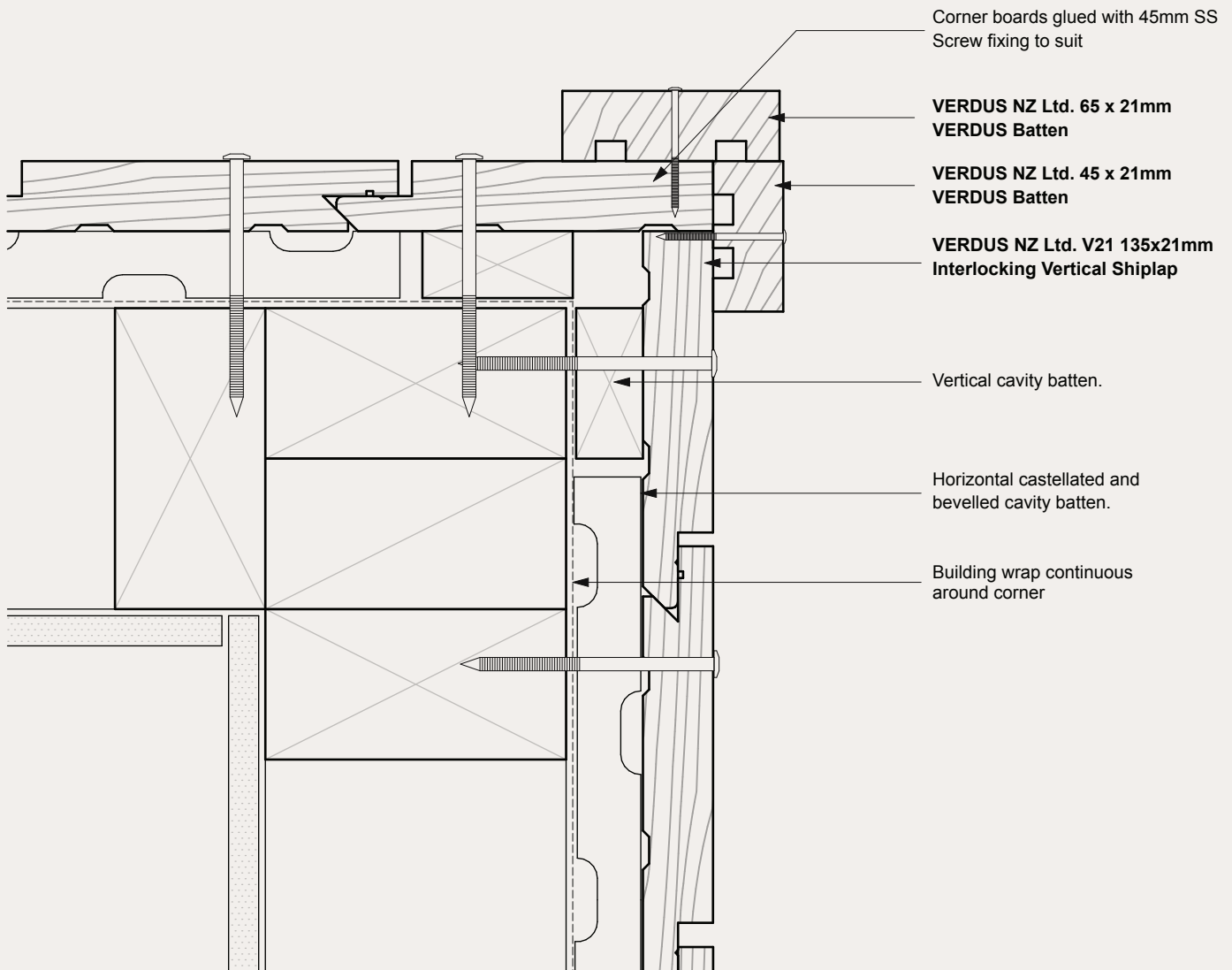
Verdus Thermowood Weatherboard System. Cavity Fix		SCALE 1:2 @ A4
DRAWING	Internal Corner Edge to Edge	06



NOTES

- All nail fixings pre-drilled min. 1mm diameter smaller than the nail gauge
- All Verdus NZ Ltd timber products to be pre-coated and cut ends and edges and all fresh cut surfaces double coated and sealed before fixing.
- All corner flashings to be 75x75mm to suit all wind zones. All flashings to have hemmed edges to NZBC E2/AS1
- Avoid contact in seaspray zones or corrosion zone D between CCA treated timber and metal flashings. Refer NZBC E2/AS1 Table 21

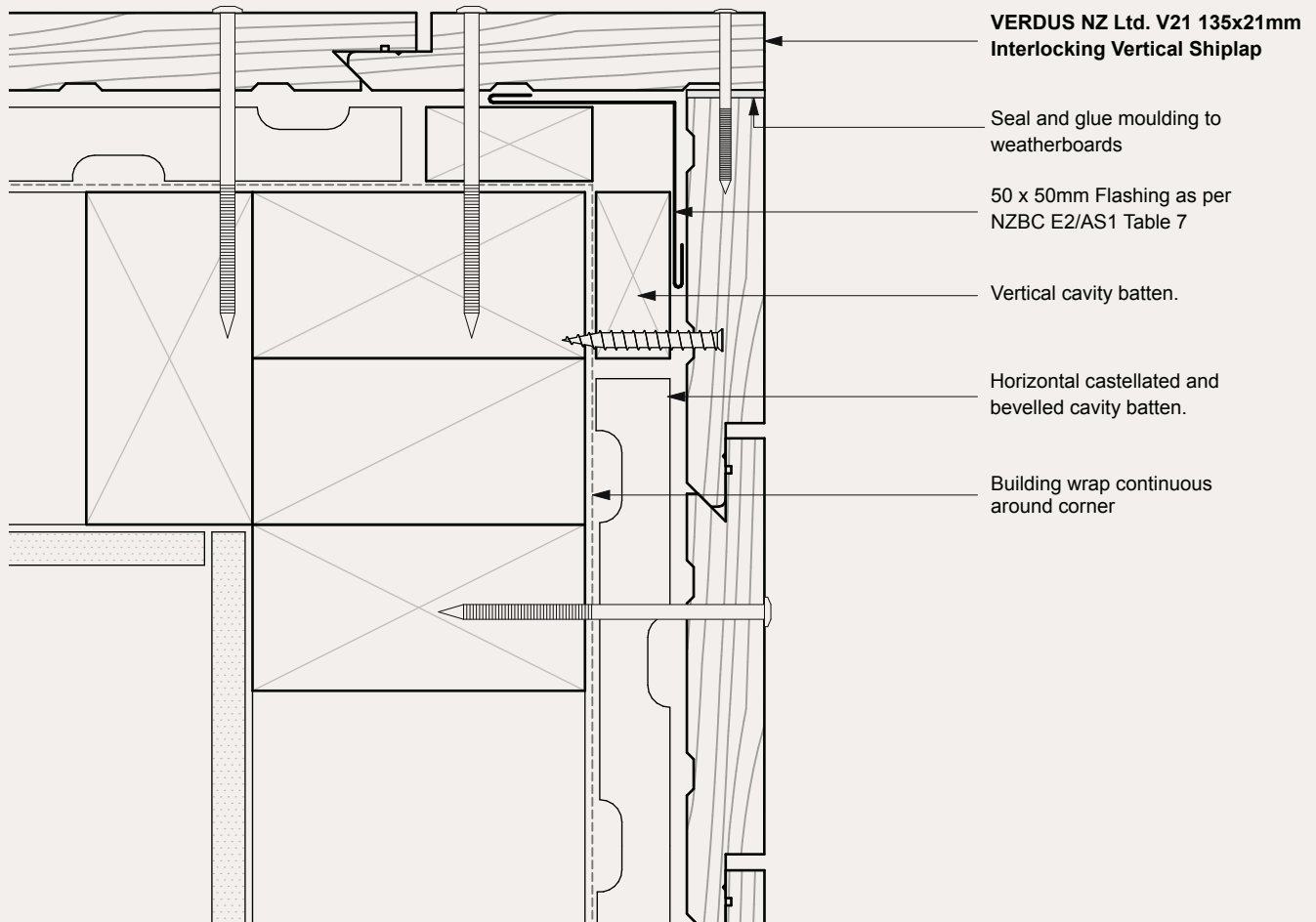
Verdus Thermowood Weatherboard System. Cavity Fix		SCALE 1:2 @ A4
DRAWING	Internal Corner Detail	07



NOTES

- All nail fixings pre-drilled min. 1mm diameter smaller than the nail gauge
- All Verdus NZ Ltd timber products to be pre-coated and cut ends and edges and all fresh cut surfaces double coated and sealed before fixing.
- All corner flashings to be 75x75mm to suit all wind zones. All flashings to have hemmed edges to NZBC E2/AS1
- Avoid contact in seaspray zones or corrosion zone D between CCA treated timber and metal flashings. Refer NZBC E2/AS1 Table 21

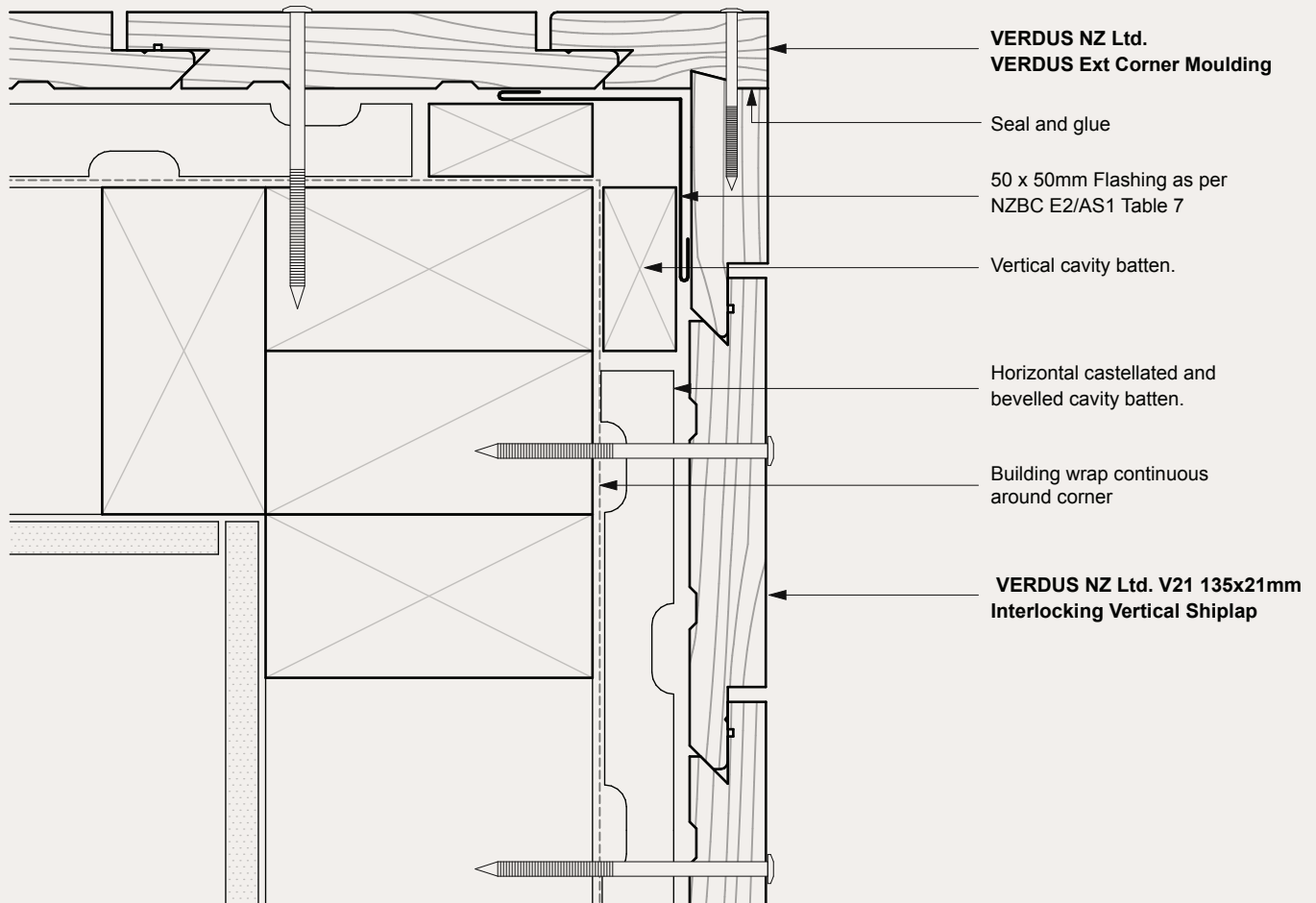
Verdus Thermowood Weatherboard System. Cavity Fix		SCALE 1:2 @ A4
DRAWING	External Corner Boxed	08



NOTES

- All nail fixings pre-drilled min. 1mm diameter smaller than the nail gauge
- All Verdus NZ Ltd timber products to be pre-coated and cut ends and edges and all fresh cut surfaces double coated and sealed before fixing.
- All corner flashings to be 75x75mm to suit all wind zones. All flashings to have hemmed edges to NZBC E2/AS1
- Avoid contact in seaspray zones or corrosion zone D between CCA treated timber and metal flashings. Refer NZBC E2/AS1 Table 21

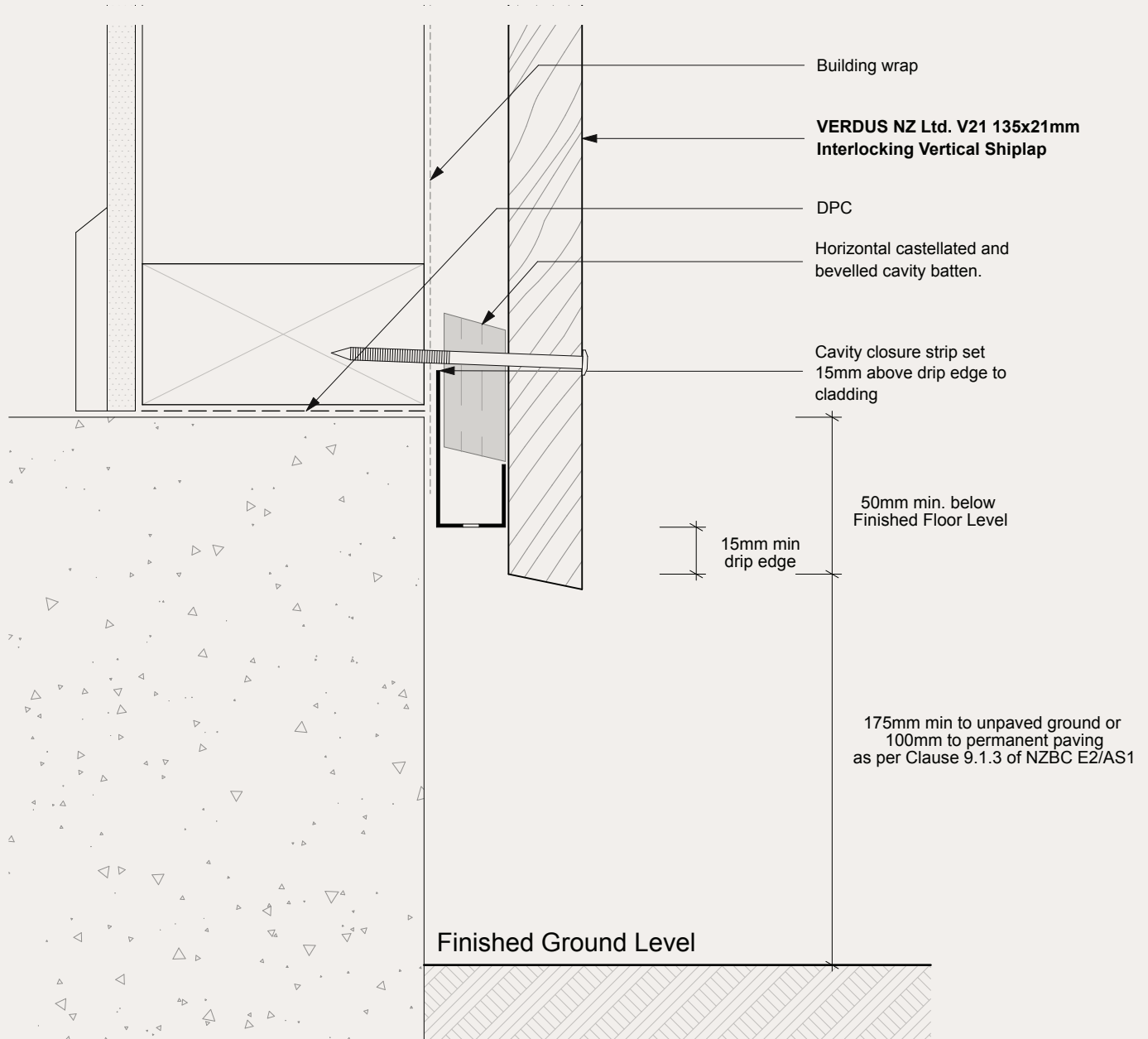
Verdus Thermowood Weatherboard System. Cavity Fix		SCALE 1:2 @ A4
DRAWING External Corner Detail		09



NOTES

- All nail fixings pre-drilled min. 1mm diameter smaller than the nail gauge
- All Verdus NZ Ltd timber products to be pre-coated and cut ends and edges and all fresh cut surfaces double coated and sealed before fixing.
- All corner flashings to be 75x75mm to suit all wind zones. All flashings to have hemmed edges to NZBC E2/AS1
- Avoid contact in seaspray zones or corrosion zone D between CCA treated timber and metal flashings. Refer NZBC E2/AS1 Table 21

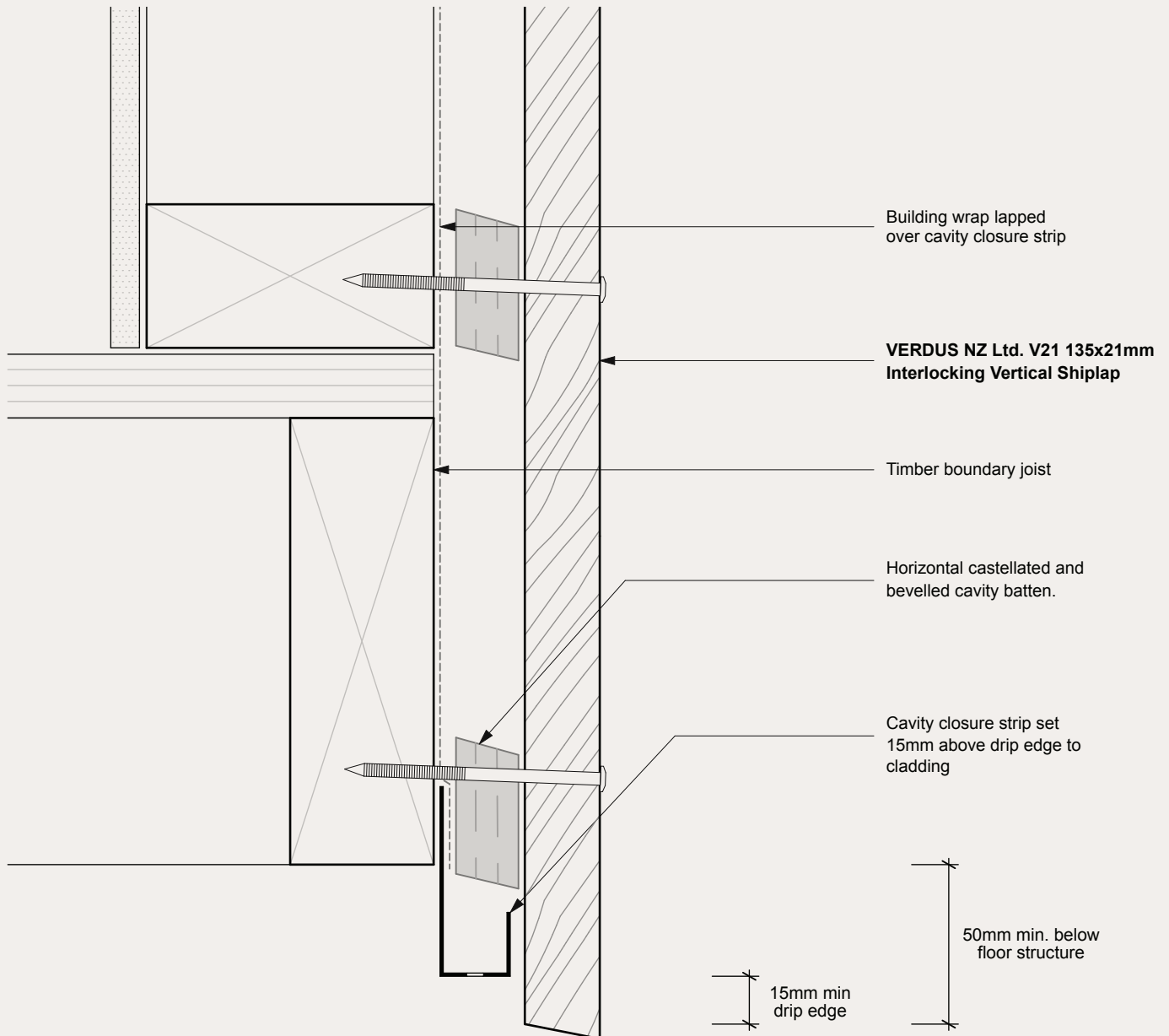
Verdus Thermowood Weatherboard System. Cavity Fix		SCALE
		1:2 @ A4
DRAWING		
External Corner Moulding Detail	10	



NOTES

- All nail fixings pre-drilled min. 1mm diameter smaller than the nail gauge
- All Verdus NZ Ltd timber products to be pre-coated and cut ends and edges and all fresh cut surfaces double coated and sealed before fixing.
- All corner flashings to be 75x75mm to suit all wind zones. All flashings to have hemmed edges to NZBC E2/AS1
- Avoid contact in seaspray zones or corrosion zone D between CCA treated timber and metal flashings. Refer NZBC E2/AS1 Table 21

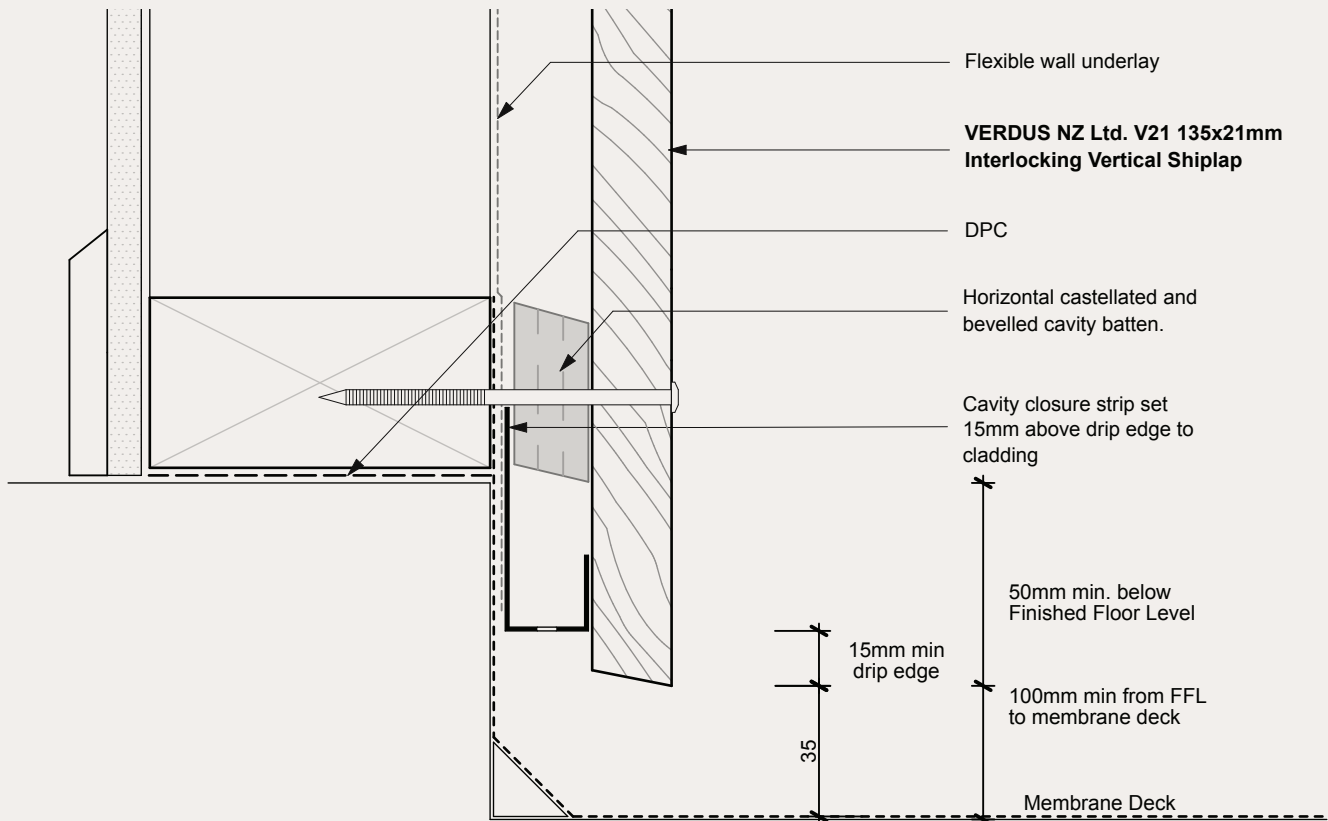
Verdus Thermowood Weatherboard System. Cavity Fix		SCALE 1:2 @ A4
DRAWING	Base of Wall - Concrete	12



NOTES

- All nail fixings pre-drilled min. 1mm diameter smaller than the nail gauge
- All Verdus NZ Ltd timber products to be pre-coated and cut ends and edges and all fresh cut surfaces double coated and sealed before fixing.
- All corner flashings to be 75x75mm to suit all wind zones. All flashings to have hemmed edges to NZBC E2/AS1
- Avoid contact in seaspray zones or corrosion zone D between CCA treated timber and metal flashings. Refer NZBC E2/AS1 Table 21

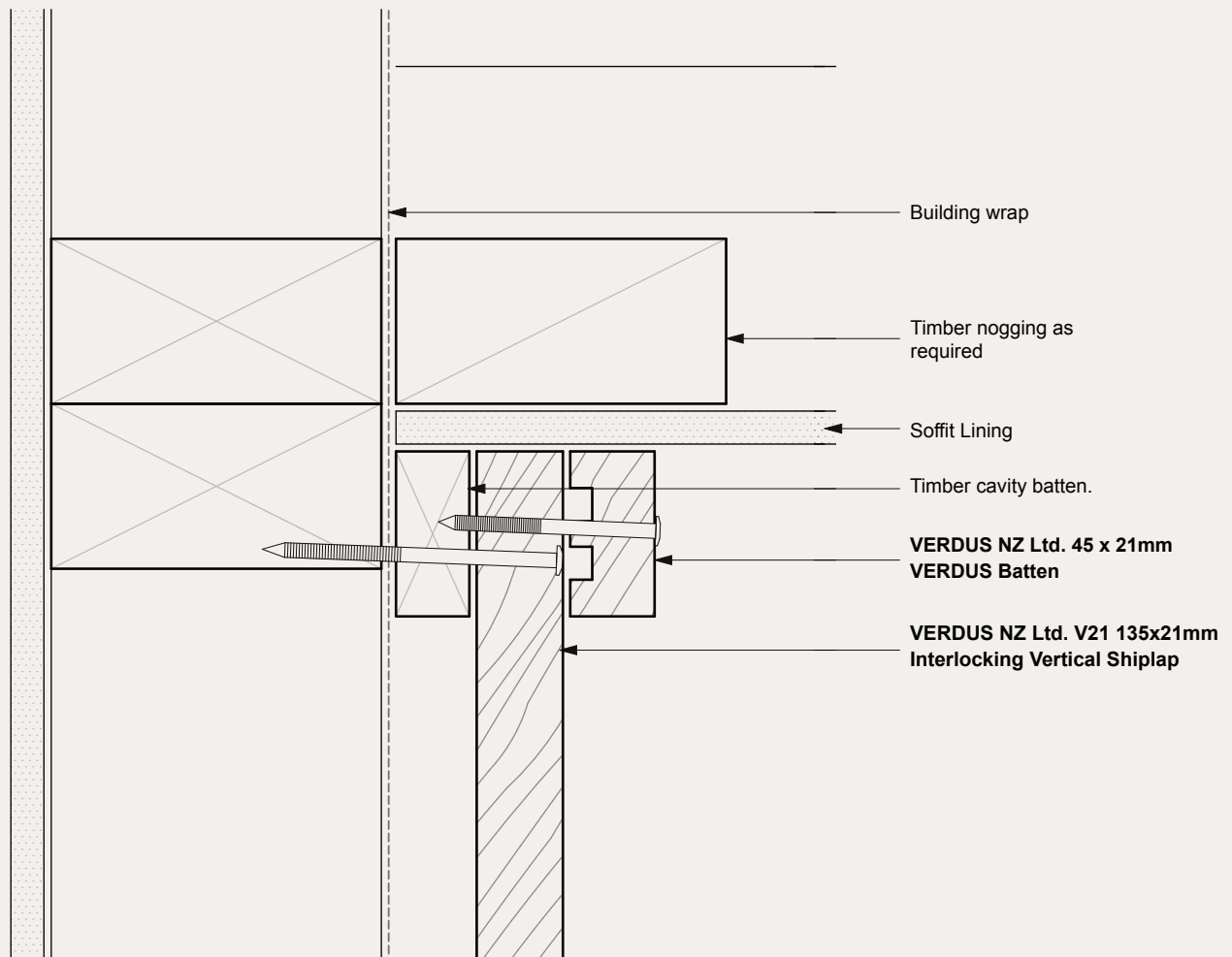
Verdus Thermowood Weatherboard System. Cavity Fix		SCALE 1:2 @ A4
DRAWING	Base of Wall - Timber	13



NOTES

- All nail fixings pre-drilled min. 1mm diameter smaller than the nail gauge
- All Verdus NZ Ltd timber products to be pre-coated and cut ends and edges and all fresh cut surfaces double coated and sealed before fixing.
- All corner flashings to be 75x75mm to suit all wind zones. All flashings to have hemmed edges to NZBC E2/AS1
- Avoid contact in seaspray zones or corrosion zone D between CCA treated timber and metal flashings. Refer NZBC E2/AS1 Table 21

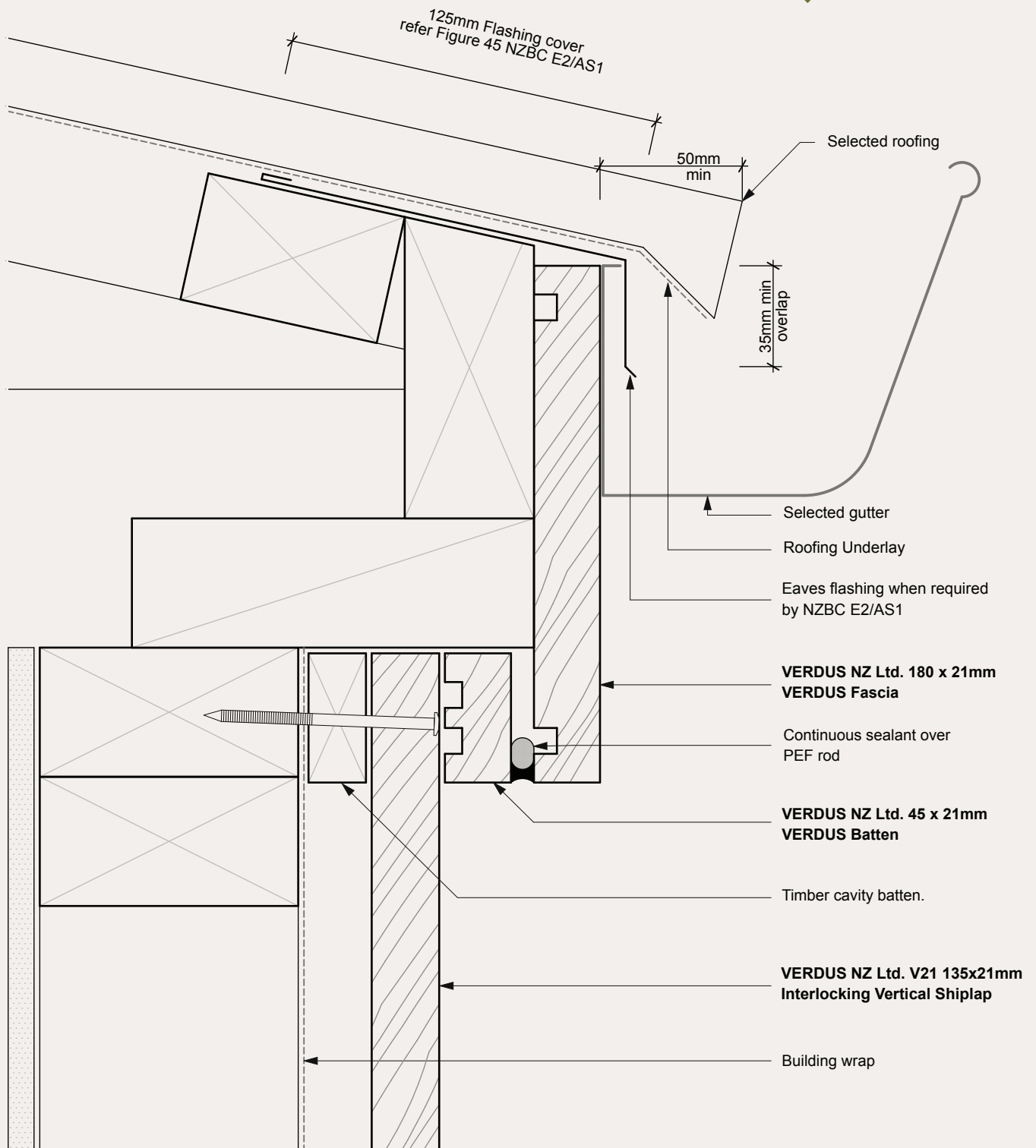
Verdus Thermowood Weatherboard System. Cavity Fix		SCALE 1:2 @ A4
DRAWING	Base to Membrane Detail	14



NOTES

- All nail fixings pre-drilled min. 1mm diameter smaller than the nail gauge
- All Verdus NZ Ltd timber products to be pre-coated and cut ends and edges and all fresh cut surfaces double coated and sealed before fixing.
- All corner flashings to be 75x75mm to suit all wind zones. All flashings to have hemmed edges to NZBC E2/AS1
- Avoid contact in seaspray zones or corrosion zone D between CCA treated timber and metal flashings. Refer NZBC E2/AS1 Table 21

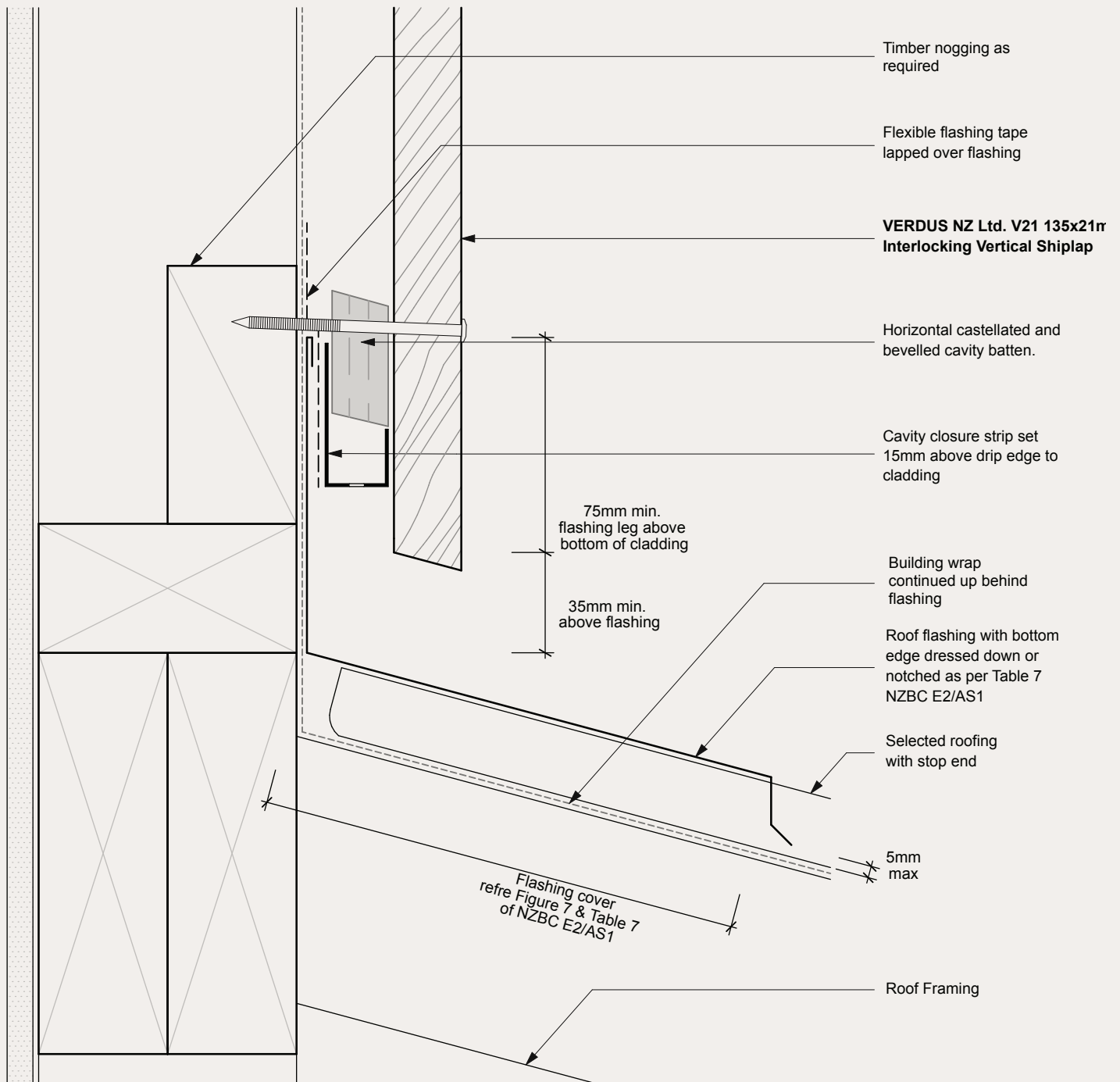
Verdus Thermowood Weatherboard System. Cavity Fix		SCALE 1:2 @ A4
DRAWING	Soffit Detail Overhang	15



NOTES

- All nail fixings pre-drilled min. 1mm diameter smaller than the nail gauge
- All Verdus NZ Ltd timber products to be pre-coated and cut ends and edges and all fresh cut surfaces double coated and sealed before fixing.
- All corner flashings to be 75x75mm to suit all wind zones. All flashings to have hemmed edges to NZBC E2/AS1
- Avoid contact in seaspray zones or corrosion zone D between CCA treated timber and metal flashings. Refer NZBC E2/AS1 Table 21

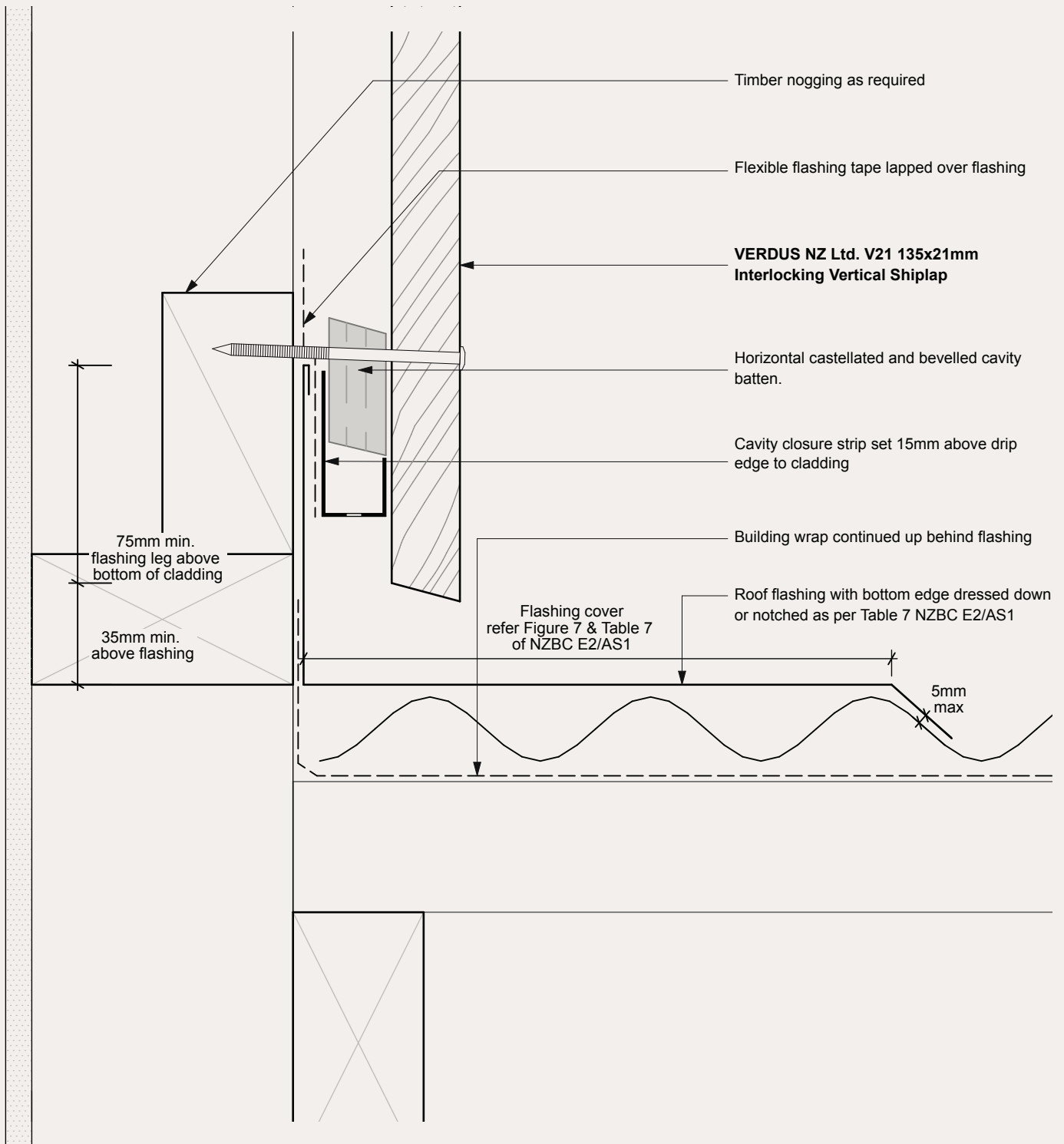
Verdus Thermowood Weatherboard System. Cavity Fix		SCALE 1:2 @ A4
DRAWING	Eaves Detail	16



NOTES

- All nail fixings pre-drilled min. 1mm diameter smaller than the nail gauge
- All Verdus NZ Ltd timber products to be pre-coated and cut ends and edges and all fresh cut surfaces double coated and sealed before fixing.
- All corner flashings to be 75x75mm to suit all wind zones. All flashings to have hemmed edges to NZBC E2/AS1
- Avoid contact in seaspray zones or corrosion zone D between CCA treated timber and metal flashings. Refer NZBC E2/AS1 Table 21

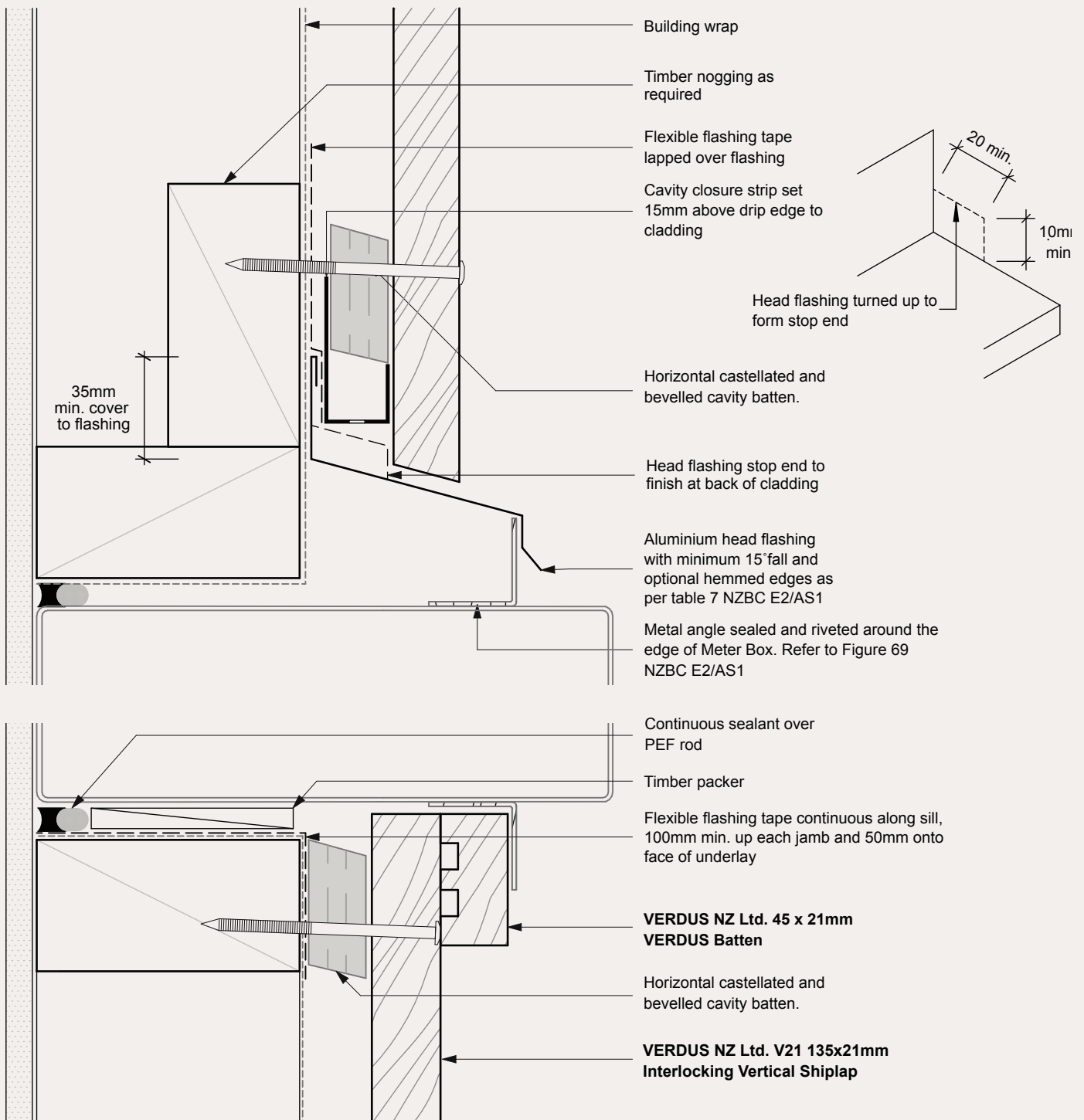
Verdus Thermowood Weatherboard System. Cavity Fix		SCALE 1:2 @ A4
DRAWING Roof/Wall Junction Detail		17



NOTES

- All nail fixings pre-drilled min. 1mm diameter smaller than the nail gauge
- All Verdus NZ Ltd timber products to be pre-coated and cut ends and edges and all fresh cut surfaces double coated and sealed before fixing.
- All corner flashings to be 75x75mm to suit all wind zones. All flashings to have hemmed edges to NZBC E2/AS1
- Avoid contact in seaspray zones or corrosion zone D between CCA treated timber and metal flashings. Refer NZBC E2/AS1 Table 21

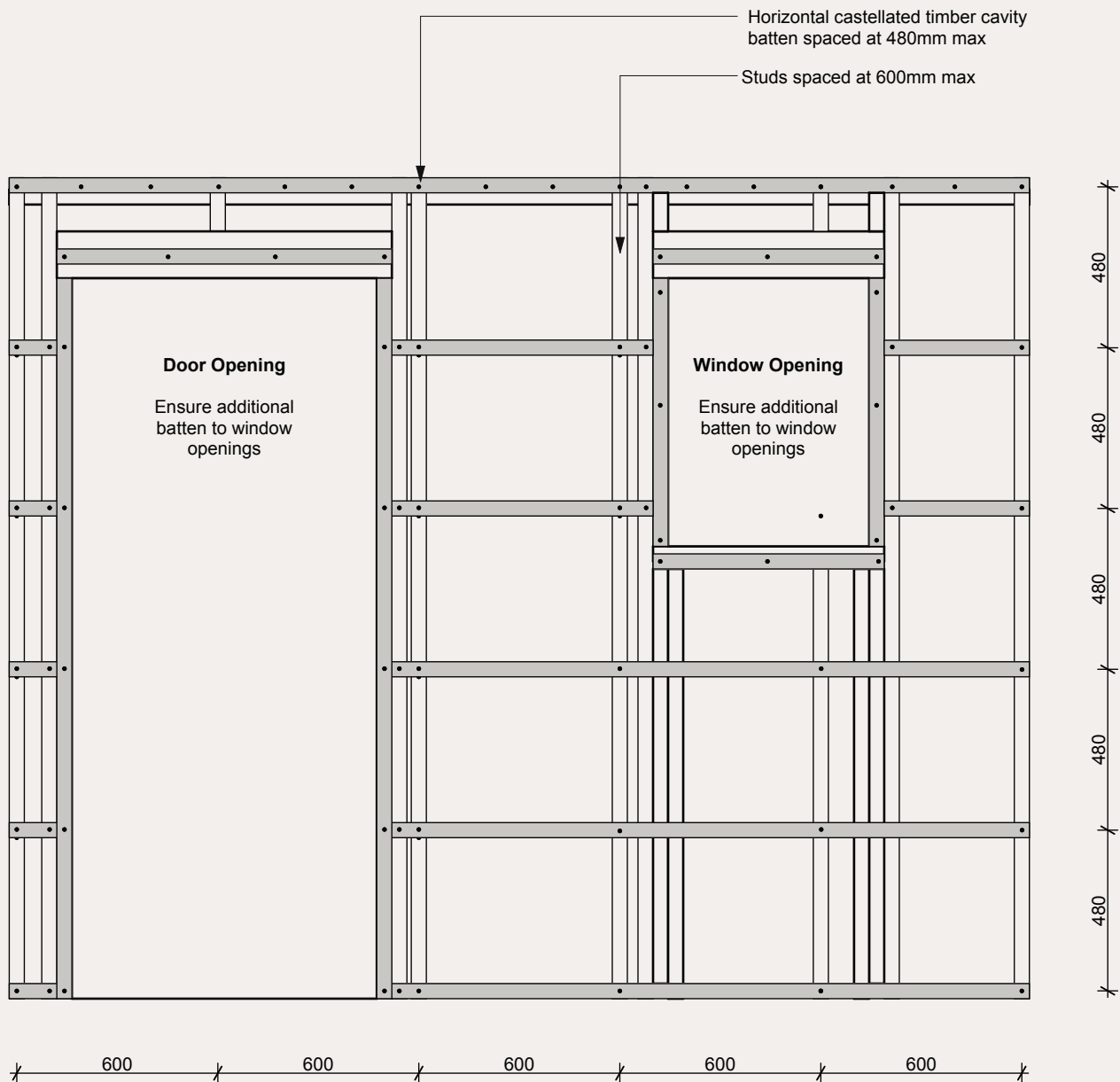
Verdus Thermowood Weatherboard System. Cavity Fix		SCALE 1:2 @ A4
DRAWING Traverse Apron Flashing		18



NOTES

- All nail fixings pre-drilled min. 1mm diameter smaller than the nail gauge
- All Verdus NZ Ltd timber products to be pre-coated and cut ends and edges and all fresh cut surfaces double coated and sealed before fixing.
- All corner flashings to be 75x75mm to suit all wind zones. All flashings to have hemmed edges to NZBC E2/AS1
- Avoid contact in seaspray zones or corrosion zone D between CCA treated timber and metal flashings. Refer NZBC E2/AS1 Table 21

Verdus Thermowood Weatherboard System. Cavity Fix		SCALE 1:2 @ A4
DRAWING	Meter Box Detail	19



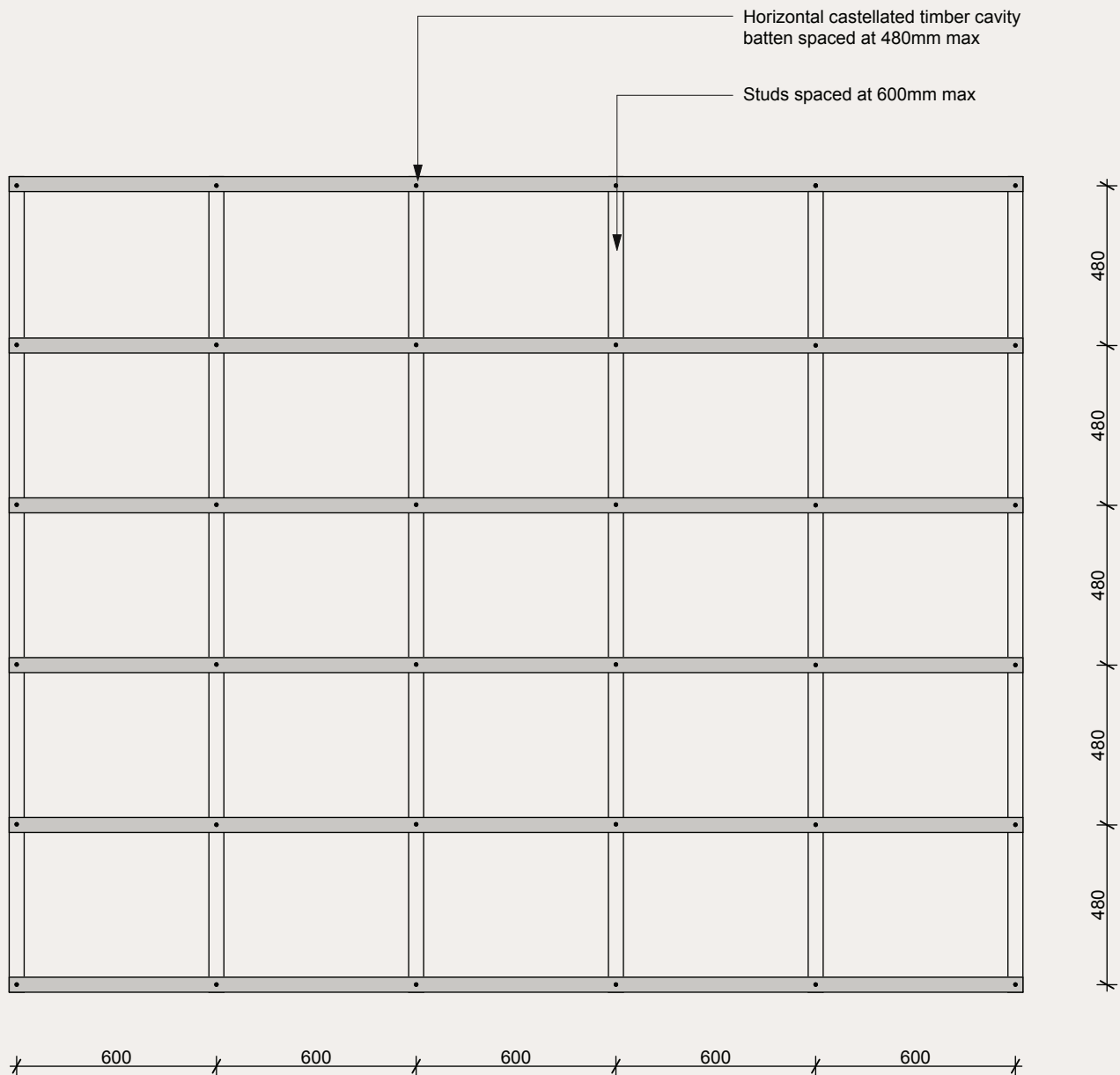
Note:

Studs can be 35 and 45mm in width

NOTES

- All nail fixings pre-drilled min. 1mm diameter smaller than the nail gauge
- All Verdus NZ Ltd timber products to be pre-coated and cut ends and edges and all fresh cut surfaces double coated and sealed before fixing.
- All corner flashings to be 75x75mm to suit all wind zones. All flashings to have hemmed edges to NZBC E2/AS1
- Avoid contact in seaspray zones or corrosion zone D between CCA treated timber and metal flashings. Refer NZBC E2/AS1 Table 21

Verdus Thermowood Weatherboard System. Cavity Fix		SCALE 1:2 @ A4
DRAWING	Cavity Batten Layout (W & D)	20



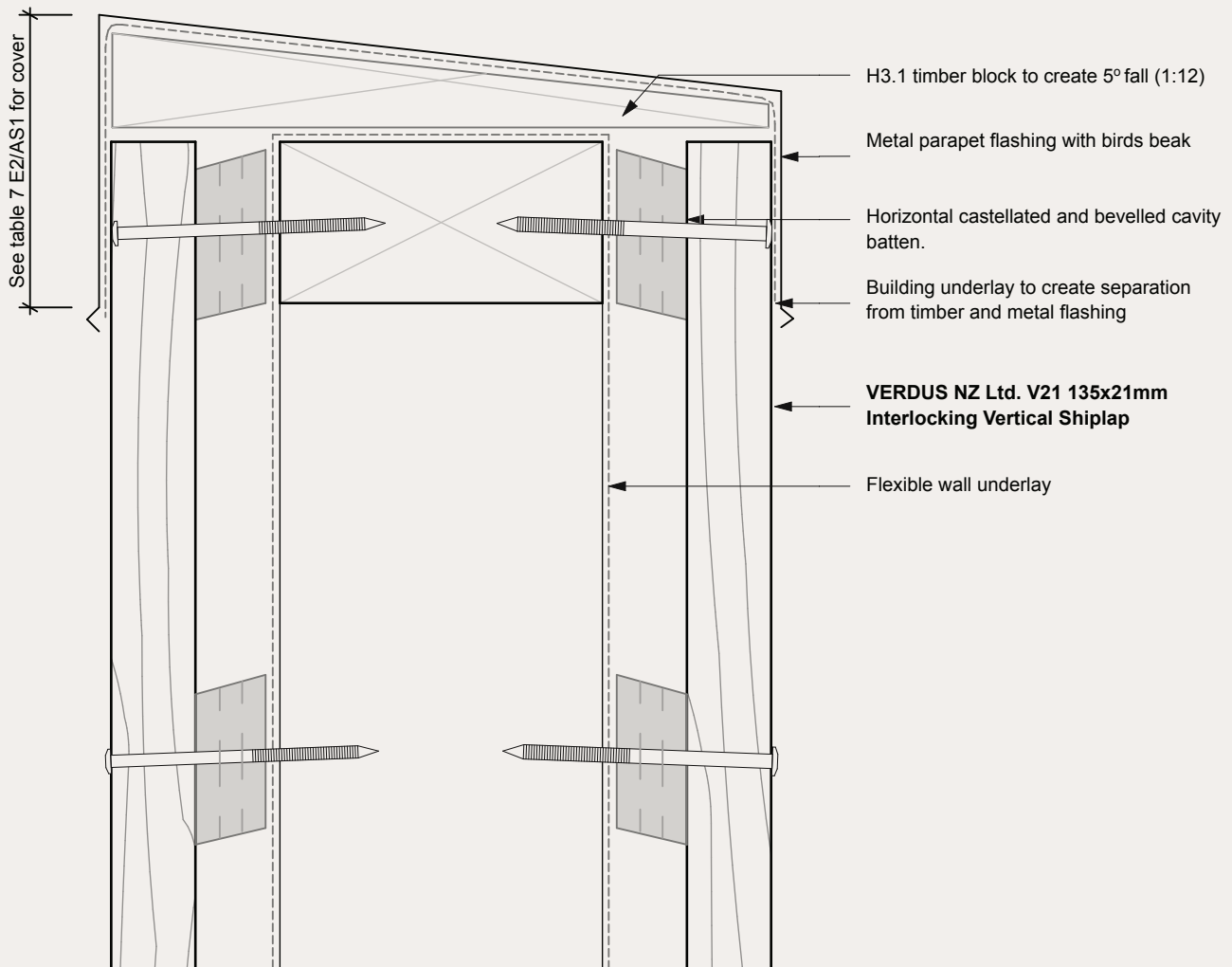
Note:

Studs can be 35 and 45mm in width

NOTES

- All nail fixings pre-drilled min. 1mm diameter smaller than the nail gauge
- All Verdus NZ Ltd timber products to be pre-coated and cut ends and edges and all fresh cut surfaces double coated and sealed before fixing.
- All corner flashings to be 75x75mm to suit all wind zones. All flashings to have hemmed edges to NZBC E2/AS1
- Avoid contact in seaspray zones or corrosion zone D between CCA treated timber and metal flashings. Refer NZBC E2/AS1 Table 21

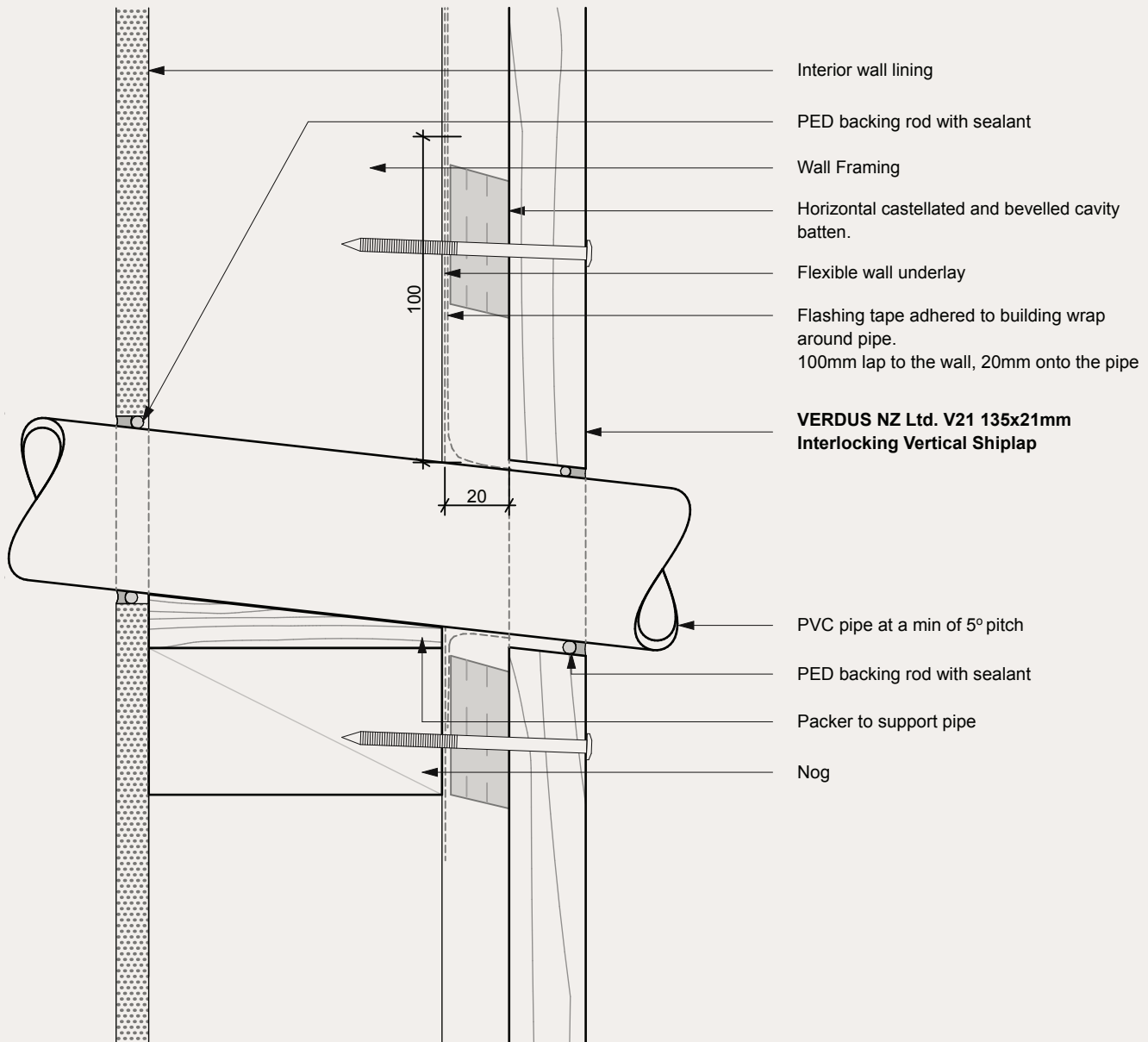
Verdus Thermowood Weatherboard System. Cavity Fix		SCALE 1:2 @ A4
DRAWING	Cavity Batten Layout	21



NOTES

- All nail fixings pre-drilled min. 1mm diameter smaller than the nail gauge
- All Verdus NZ Ltd timber products to be pre-coated and cut ends and edges and all fresh cut surfaces double coated and sealed before fixing.
- All corner flashings to be 75x75mm to suit all wind zones. All flashings to have hemmed edges to NZBC E2/AS1
- Avoid contact in seaspray zones or corrosion zone D between CCA treated timber and metal flashings. Refer NZBC E2/AS1 Table 21

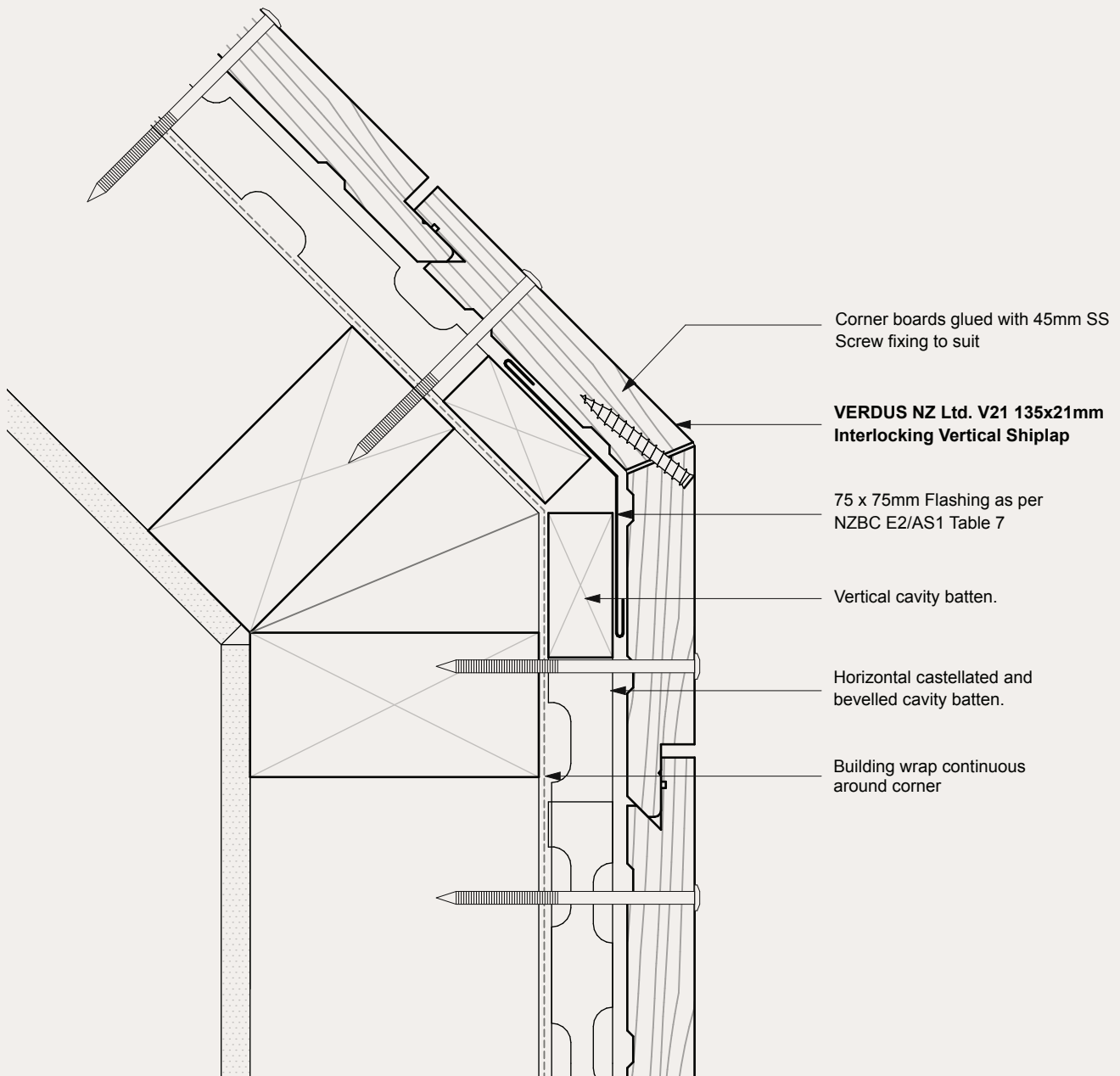
Verdus Thermowood Weatherboard System. Cavity Fix		SCALE 1:2 @ A4
DRAWING	Parapet Detail	22



NOTES

- All nail fixings pre-drilled min. 1mm diameter smaller than the nail gauge
- All Verdus NZ Ltd timber products to be pre-coated and cut ends and edges and all fresh cut surfaces double coated and sealed before fixing.
- All corner flashings to be 75x75mm to suit all wind zones. All flashings to have hemmed edges to NZBC E2/AS1
- Avoid contact in seaspray zones or corrosion zone D between CCA treated timber and metal flashings. Refer NZBC E2/AS1 Table 21

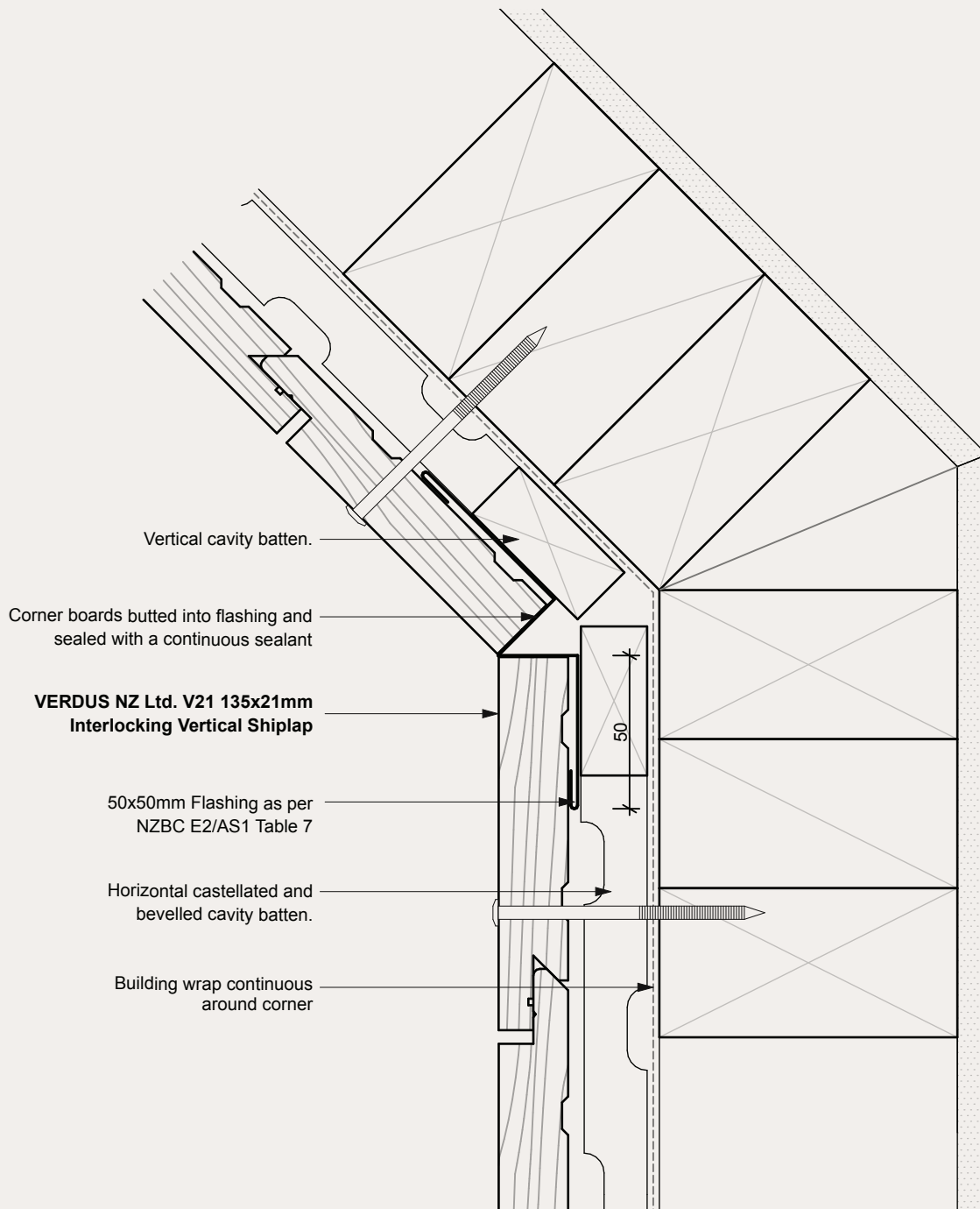
Verdus Thermowood Weatherboard System. Cavity Fix		SCALE 1:2 @ A4
DRAWING	Pipe Penetration Detail	23



NOTES

- All nail fixings pre-drilled min. 1mm diameter smaller than the nail gauge
- All Verdus NZ Ltd timber products to be pre-coated and cut ends and edges and all fresh cut surfaces double coated and sealed before fixing.
- All corner flashings to be 75x75mm to suit all wind zones. All flashings to have hemmed edges to NZBC E2/AS1
- Avoid contact in seaspray zones or corrosion zone D between CCA treated timber and metal flashings. Refer NZBC E2/AS1 Table 21

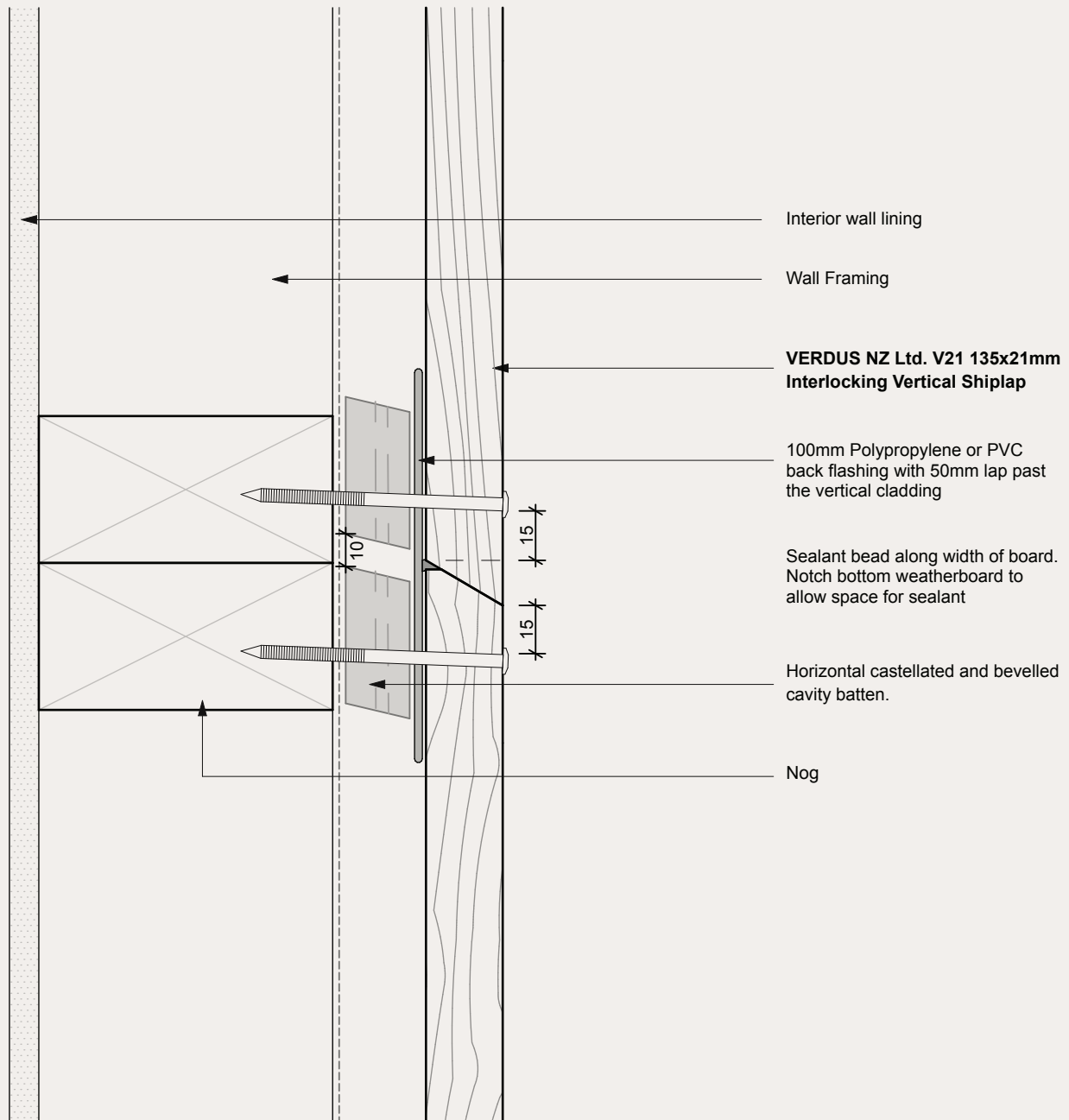
Verdus Thermowood Weatherboard System. Cavity Fix		SCALE 1:2 @ A4
DRAWING 135 Degree External Corner Detail	24	



NOTES

- All nail fixings pre-drilled min. 1mm diameter smaller than the nail gauge
- All Verdus NZ Ltd timber products to be pre-coated and cut ends and edges and all fresh cut surfaces double coated and sealed before fixing.
- All corner flashings to be 75x75mm to suit all wind zones. All flashings to have hemmed edges to NZBC E2/AS1
- Avoid contact in seaspray zones or corrosion zone D between CCA treated timber and metal flashings. Refer NZBC E2/AS1 Table 21

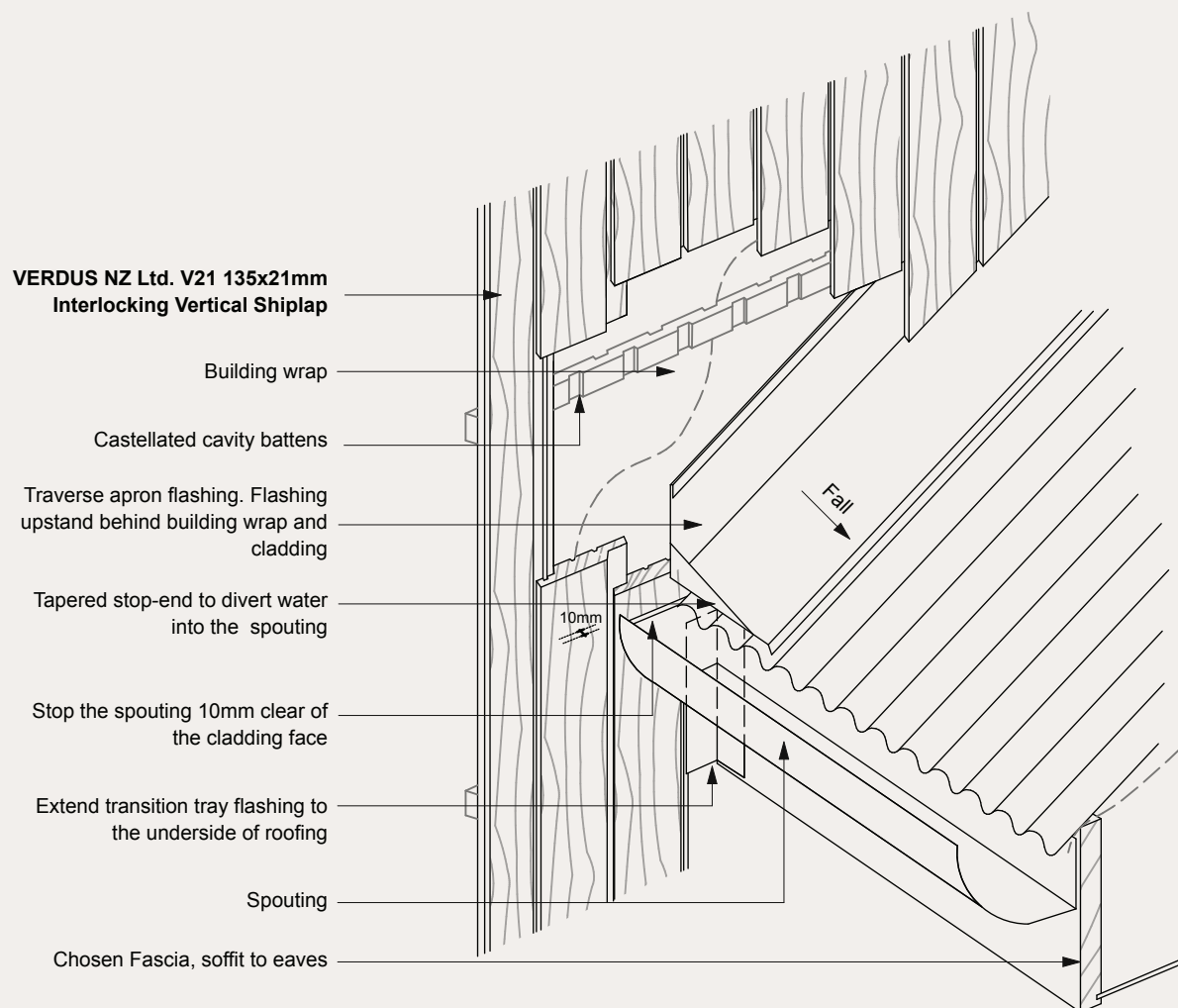
Verdus Thermowood Weatherboard System. Cavity Fix		SCALE 1:2 @ A4
DRAWING 135 Degree Internal Corner Detail		25



NOTES

- All nail fixings pre-drilled min. 1mm diameter smaller than the nail gauge
- All Verdus NZ Ltd timber products to be pre-coated and cut ends and edges and all fresh cut surfaces double coated and sealed before fixing.
- All corner flashings to be 75x75mm to suit all wind zones. All flashings to have hemmed edges to NZBC E2/AS1
- Avoid contact in seaspray zones or corrosion zone D between CCA treated timber and metal flashings. Refer NZBC E2/AS1 Table 21

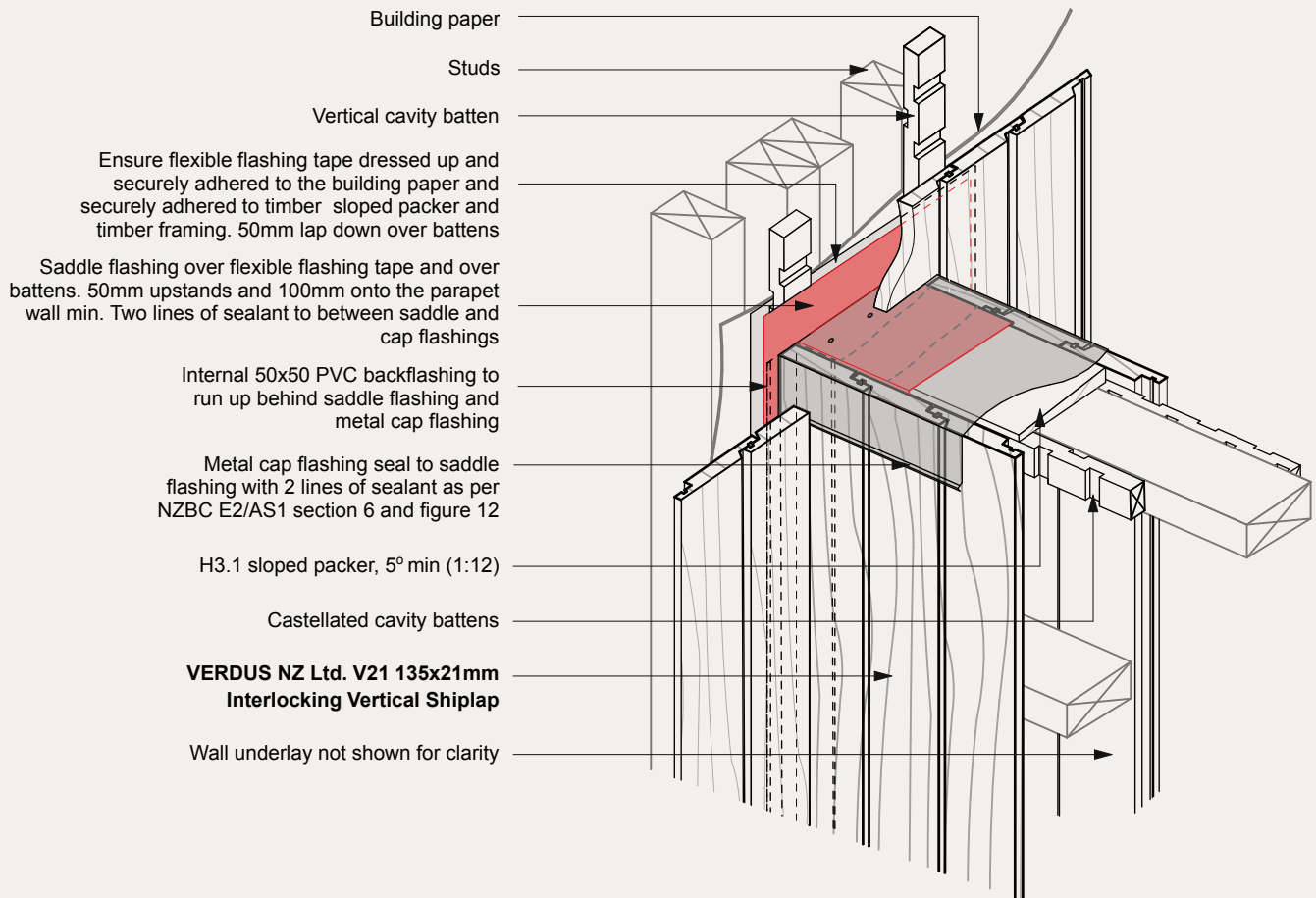
Verdus Thermowood Weatherboard System. Cavity Fix		SCALE 1:2 @ A4
DRAWING	Scarf Joint Detail	26



NOTES

- All nail fixings pre-drilled min. 1mm diameter smaller than the nail gauge
- All Verdus NZ Ltd timber products to be pre-coated and cut ends and edges and all fresh cut surfaces double coated and sealed before fixing.
- All corner flashings to be 75x75mm to suit all wind zones. All flashings to have hemmed edges to NZBC E2/AS1
- Avoid contact in seaspray zones or corrosion zone D between CCA treated timber and metal flashings. Refer NZBC E2/AS1 Table 21

Verdus Thermowood Weatherboard System. Cavity Fix		SCALE 1:2 @ A4
DRAWING	Roof Kickout Detail	27



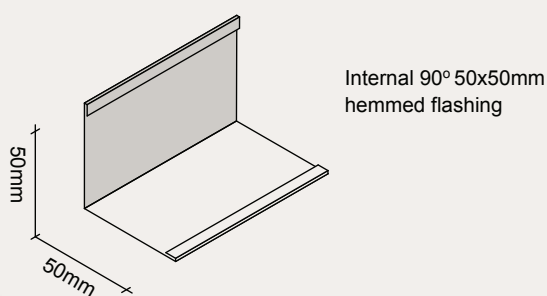
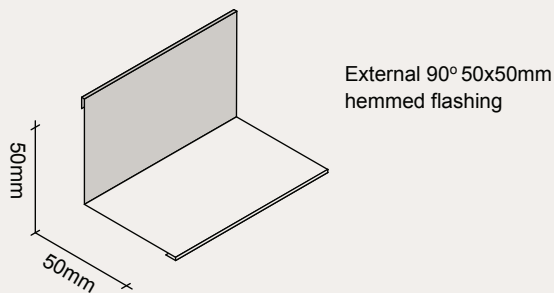
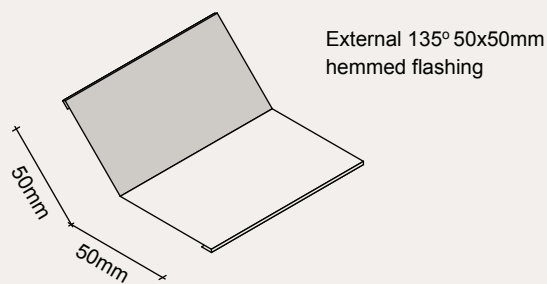
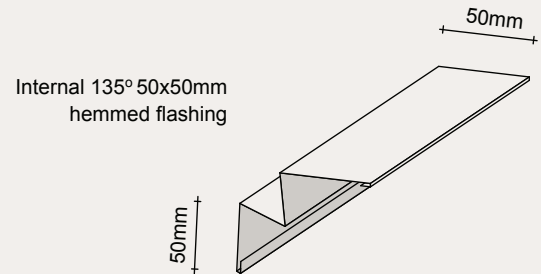
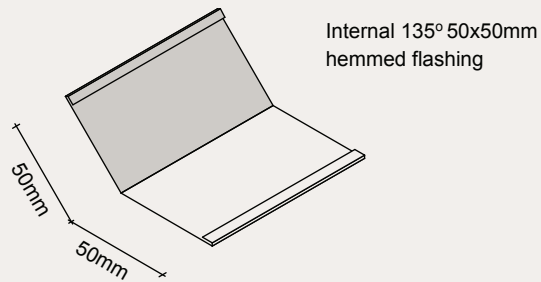
See NZBC E2/AS1 Figure 12 for step by step detail

detail to be read in conjunction with Parapet Detail

NOTES

- All nail fixings pre-drilled min. 1mm diameter smaller than the nail gauge
- All Verdus NZ Ltd timber products to be pre-coated and cut ends and edges and all fresh cut surfaces double coated and sealed before fixing.
- All corner flashings to be 75x75mm to suit all wind zones. All flashings to have hemmed edges to NZBC E2/AS1
- Avoid contact in seaspray zones or corrosion zone D between CCA treated timber and metal flashings. Refer NZBC E2/AS1 Table 21

Verdus Thermowood Weatherboard System. Cavity Fix		SCALE 1:2 @ A4
DRAWING Parapet Balstrade Detail		28



NOTES

- All nail fixings pre-drilled min. 1mm diameter smaller than the nail gauge
- All Verdus NZ Ltd timber products to be pre-coated and cut ends and edges and all fresh cut surfaces double coated and sealed before fixing.
- All corner flashings to be 75x75mm to suit all wind zones. All flashings to have hemmed edges to NZBC E2/AS1
- Avoid contact in seaspray zones or corrosion zone D between CCA treated timber and metal flashings. Refer NZBC E2/AS1 Table 21

Verdus Thermowood Weatherboard System. Cavity Fix		SCALE 1:2 @ A4
DRAWING	Flashings	29